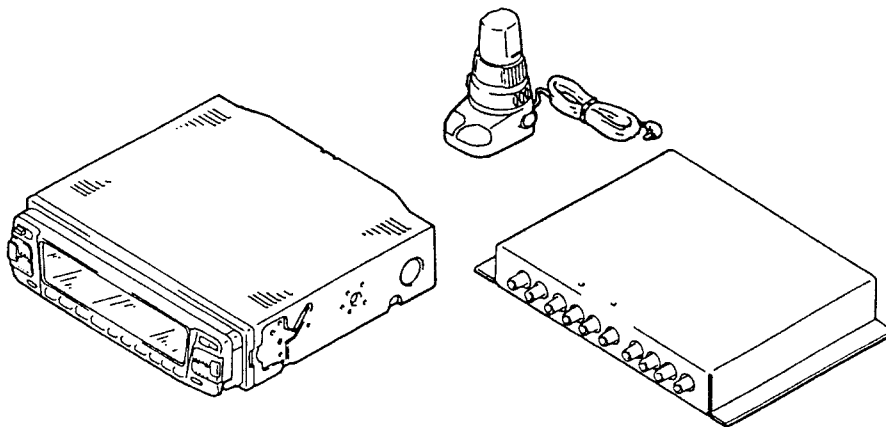


ON-SERVOING

# MDX-400

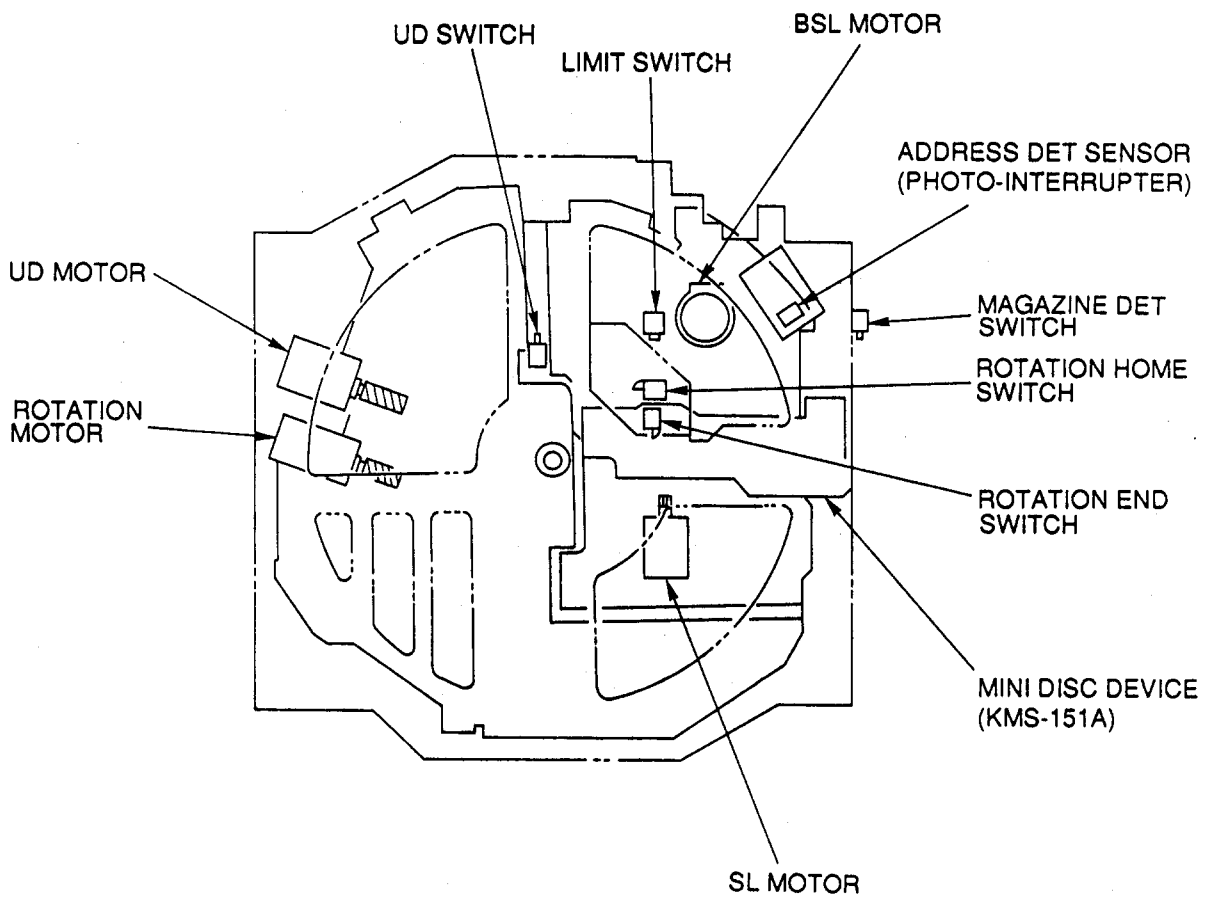
## MECHANISM OPERATION

### MANUAL



FM/AM MINI DISC CHANGER  
**SONY**<sup>®</sup>

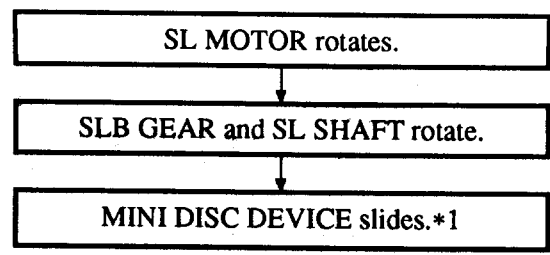
# 1. Electrical parts layout diagram



**Fig. 1-1 View from bottom**

## 2. Each MOTOR operation

### 2-1. SL MOTOR



\*1: LIMIT SWITCH detects inmost position of the device.

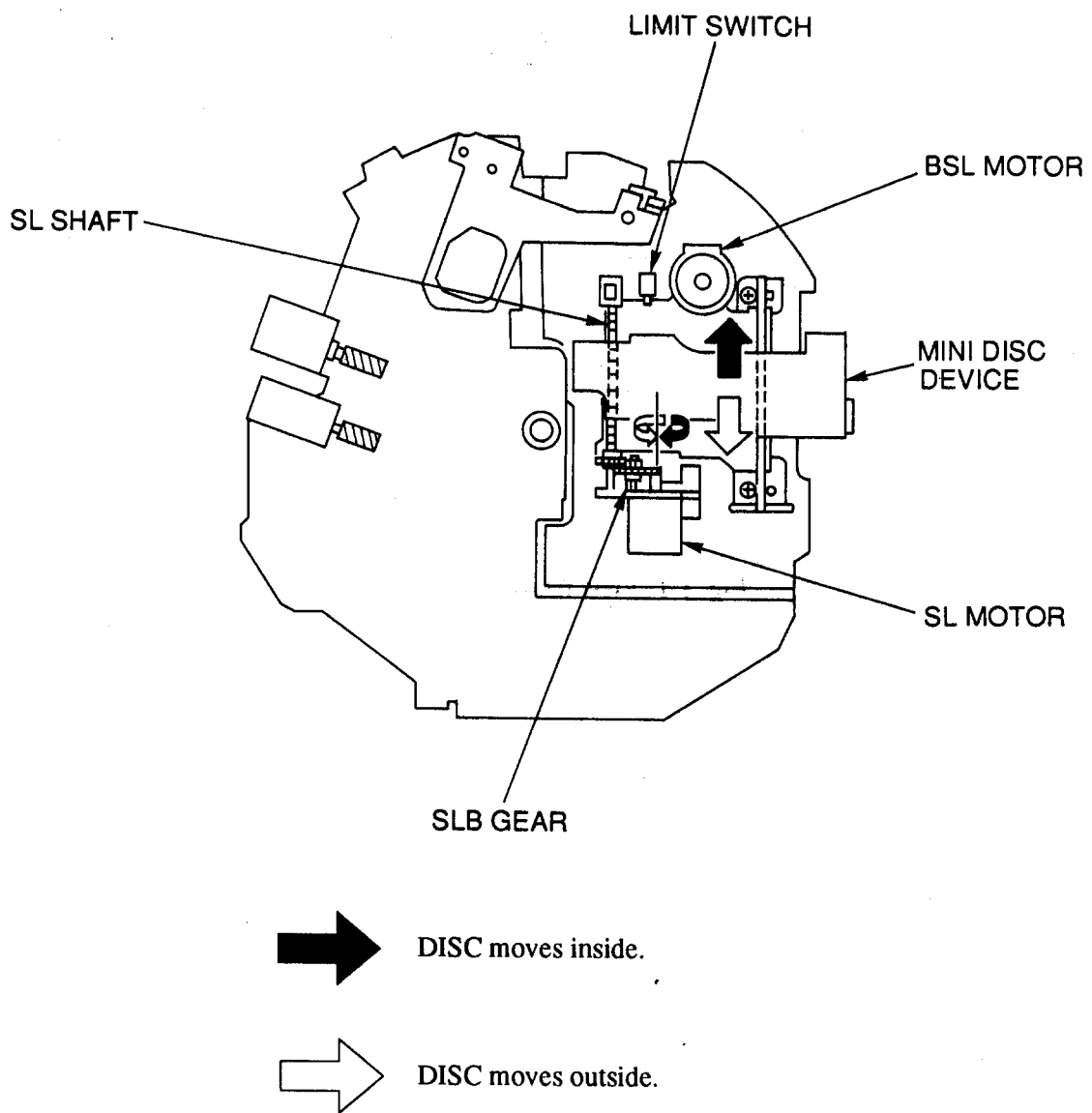
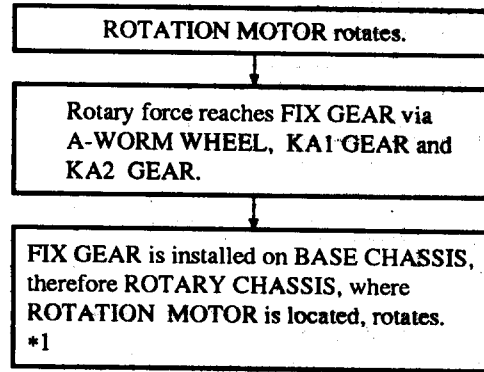


Fig. 2-1 View from bottom

## 2-2. ROTATION MOTOR



\*1: ROTARY CHASSIS moves within area shown by arrow © from the position where ROTATION HOME SWITCH is turned on by portion A to the position where ROTATION END SWITCH is turned by portion B.

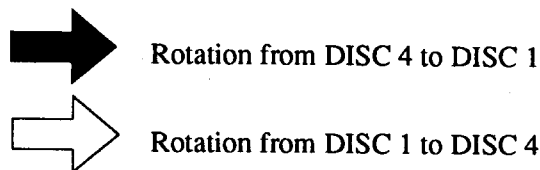
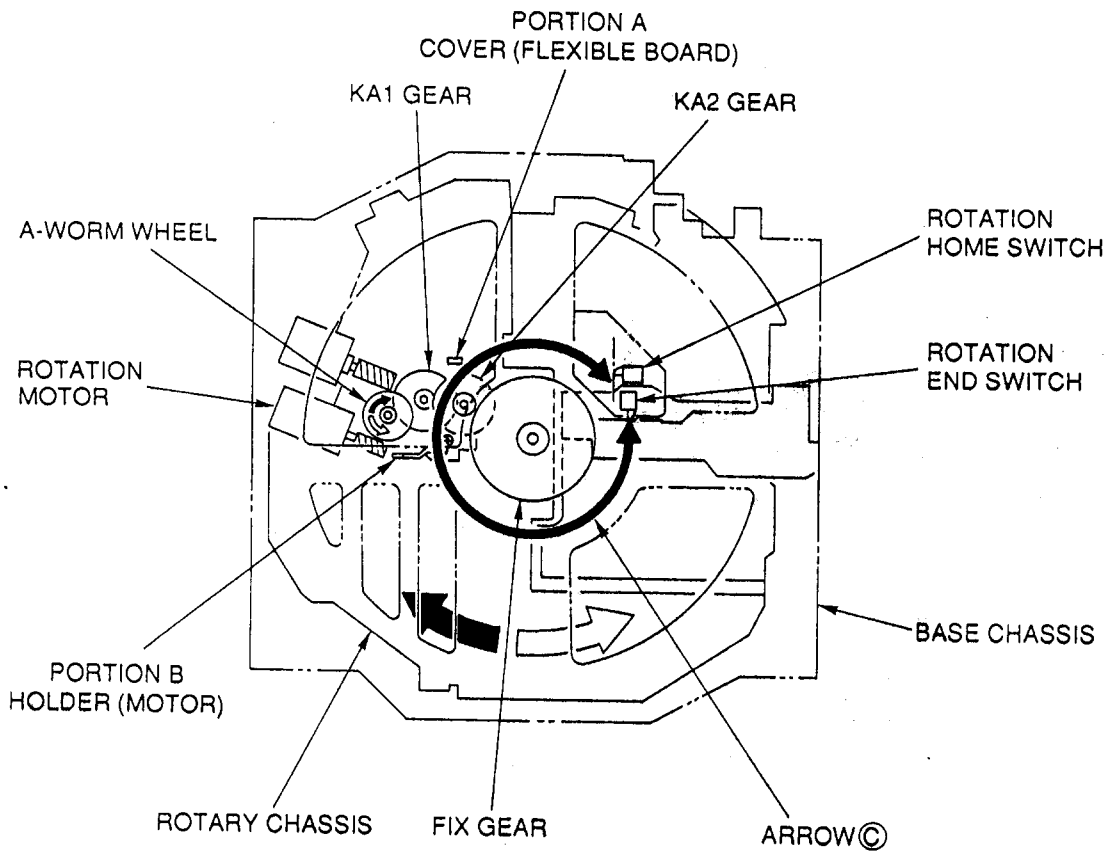


Fig. 2-2 View from bottom

### 2-3. UD MOTOR

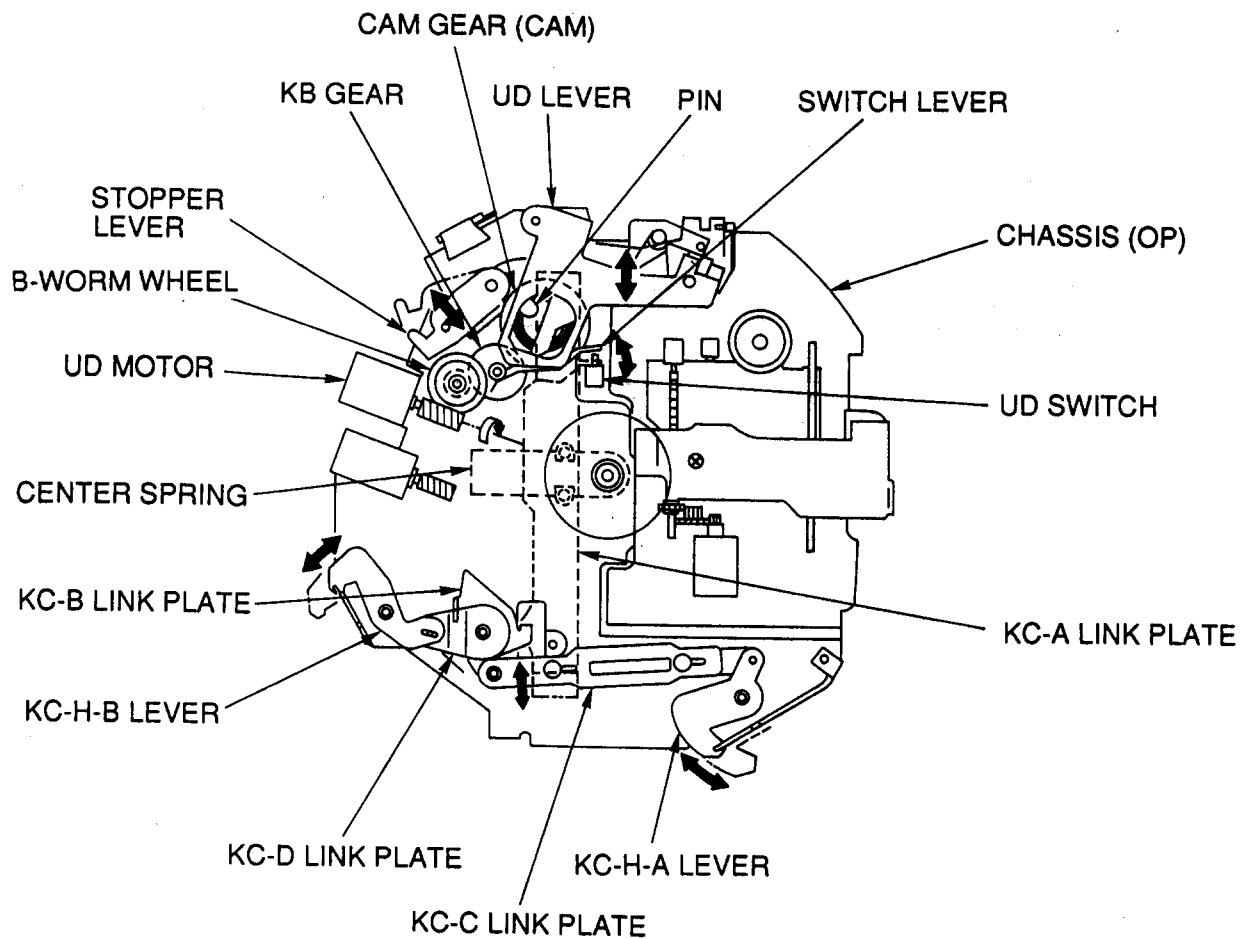
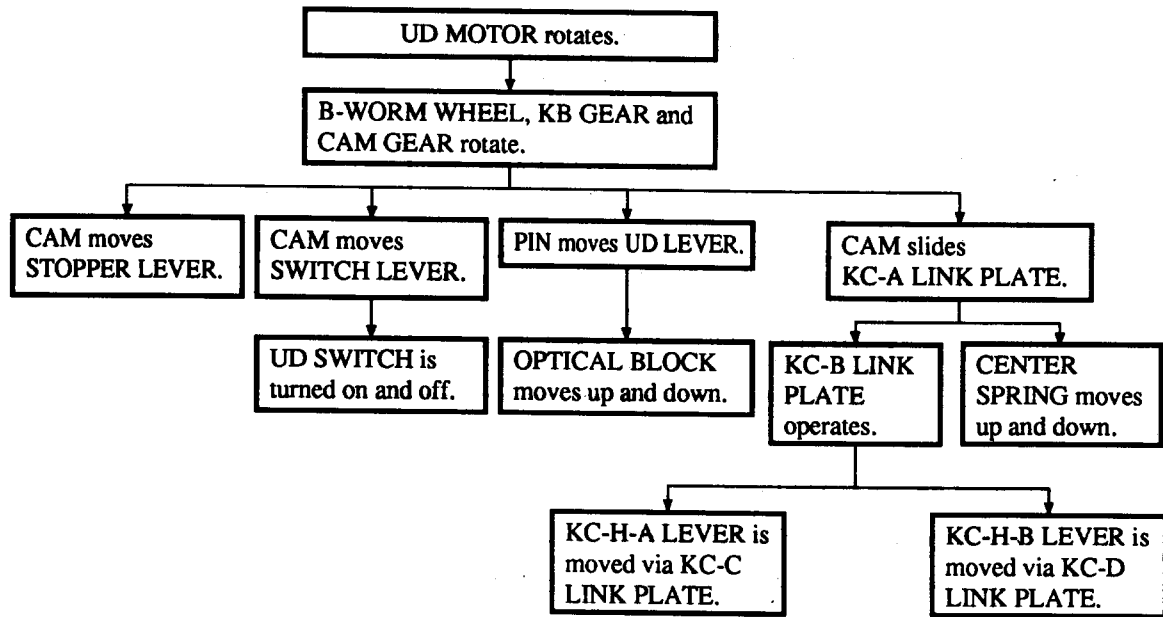


Fig. 2-3 View from bottom

# 3. Mechanism operation

## 3-1. MAGAZINE IN

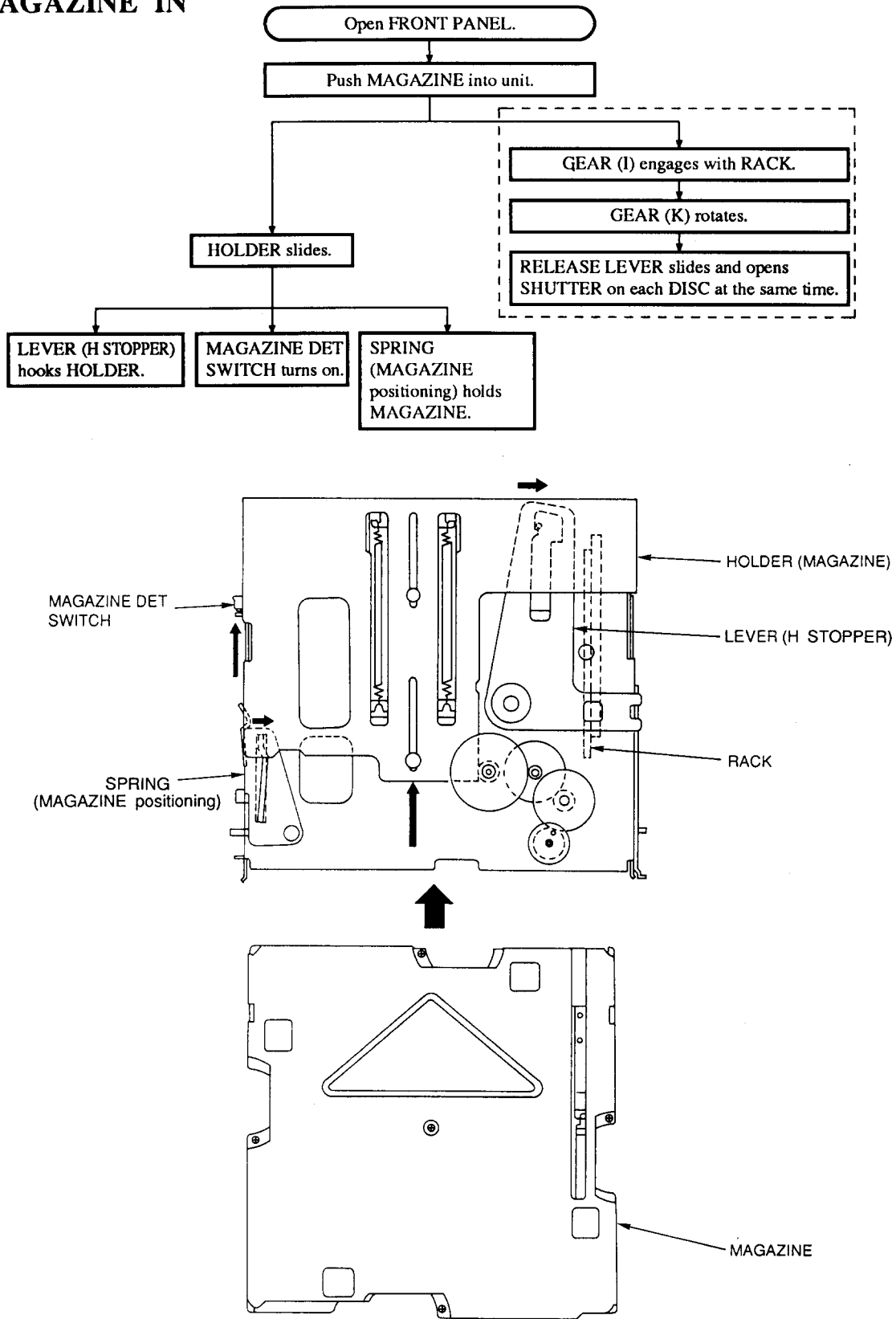


Fig.3-1

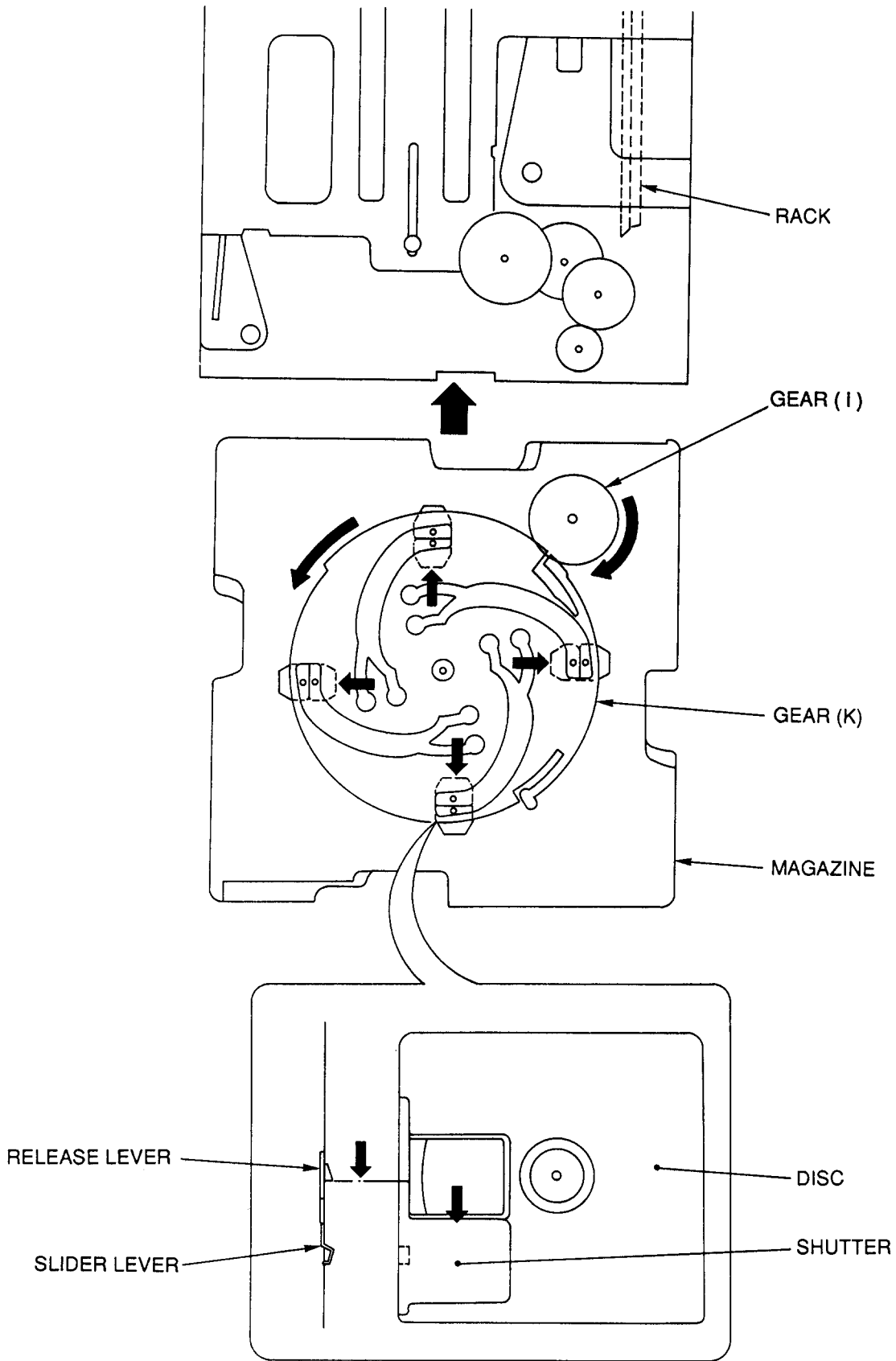
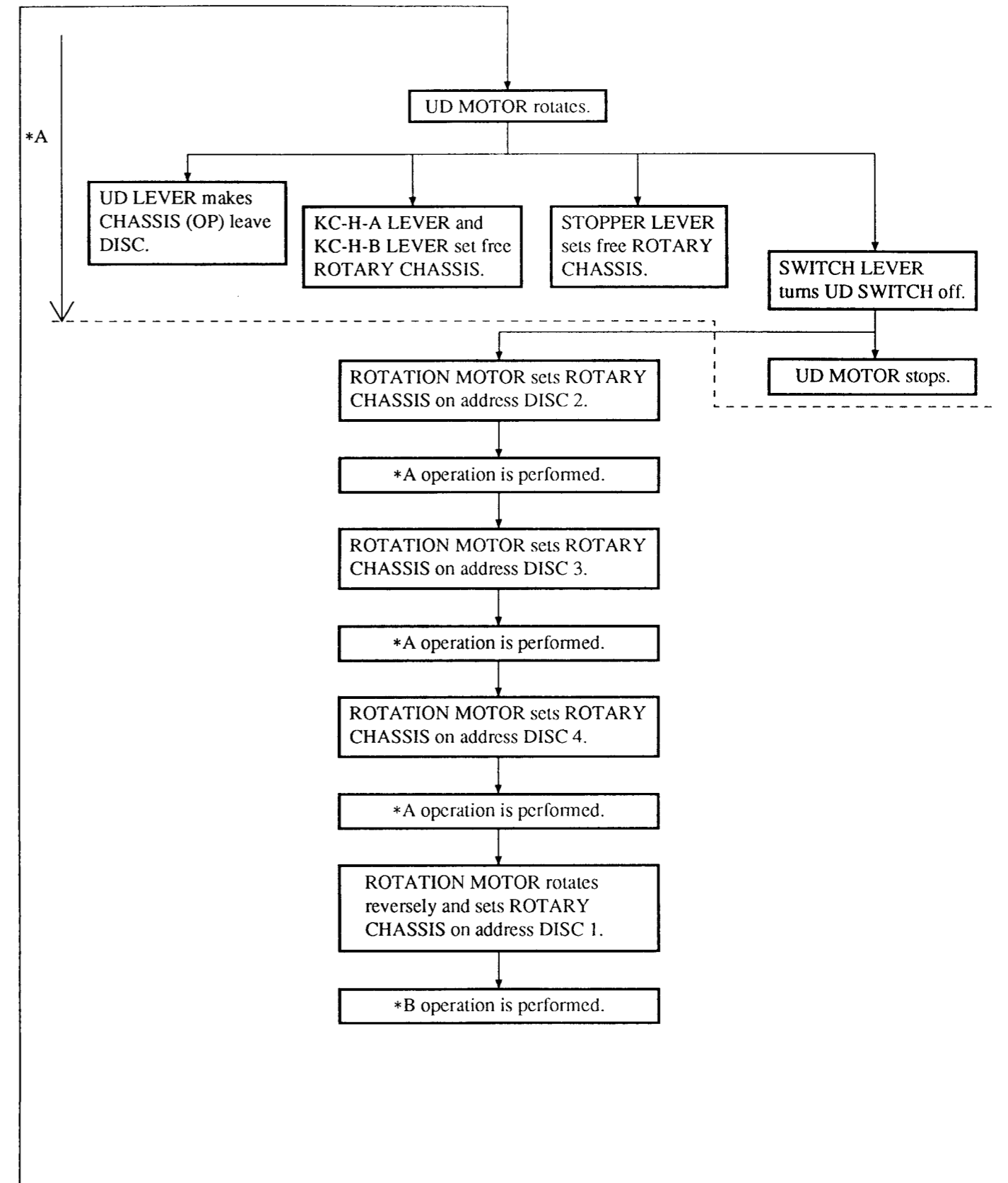
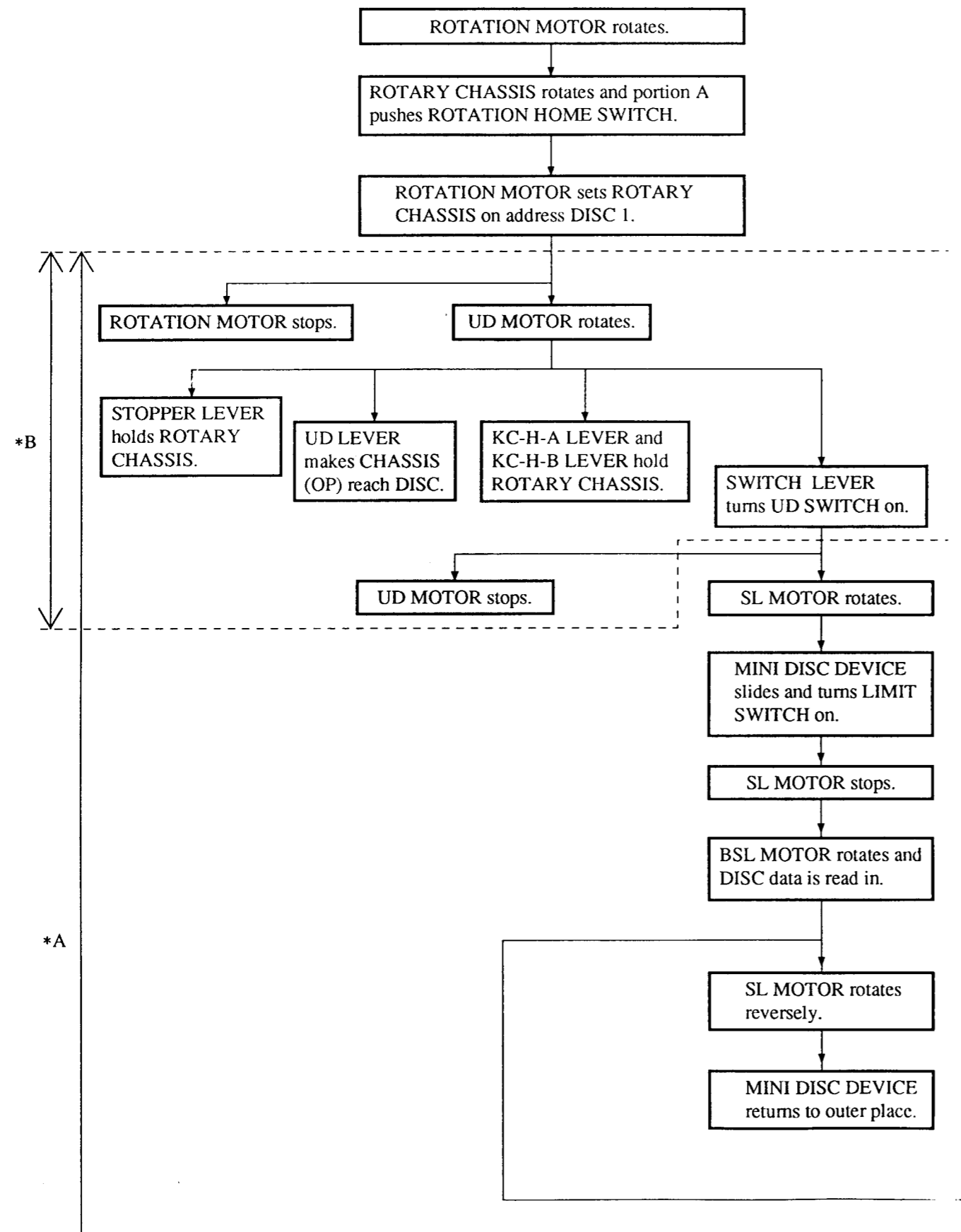


Fig. 3-2 View from bottom

3-2. DISC check





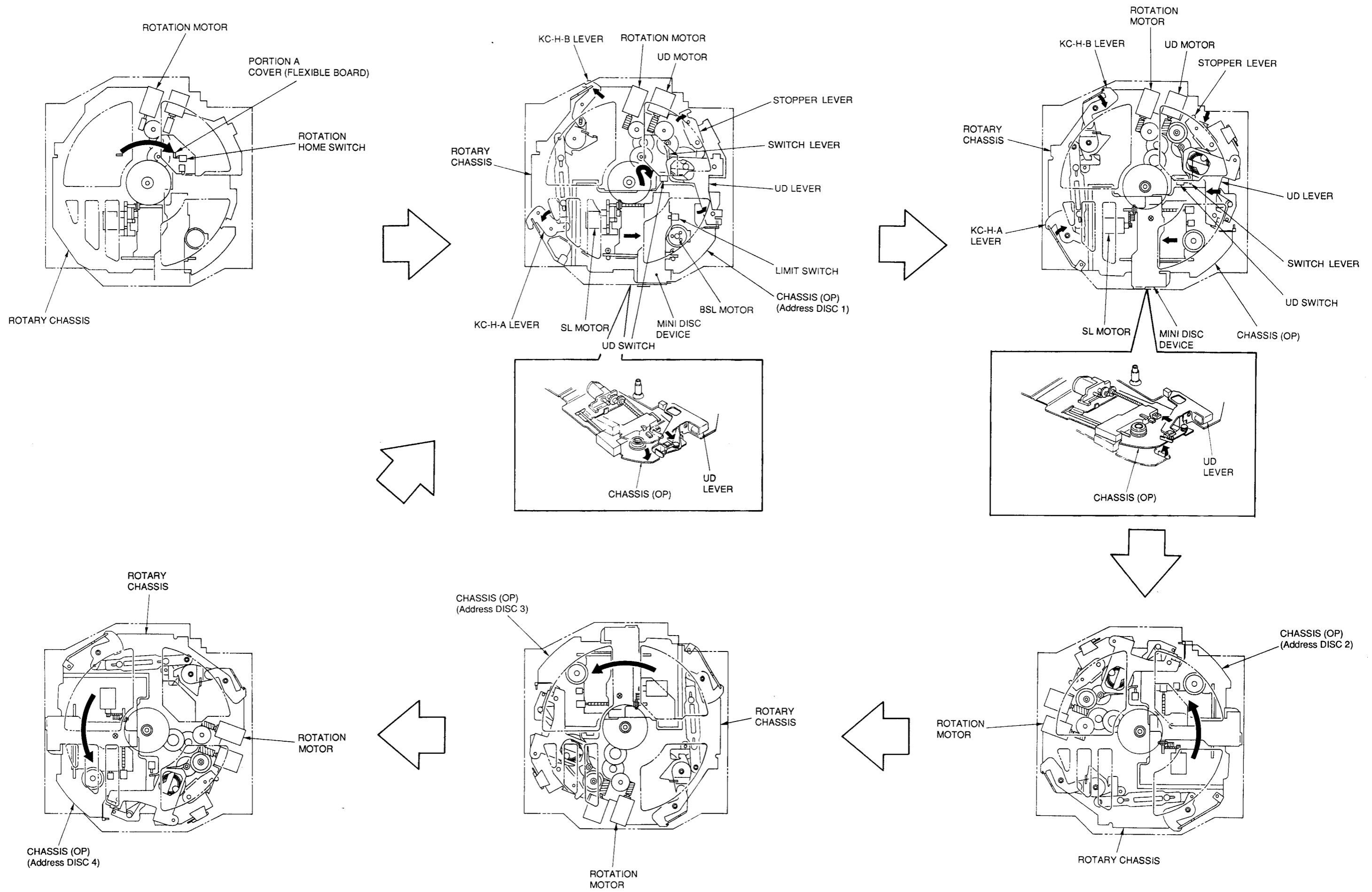


Fig. 3-3 View from bottom

### 3-3. MAGAZINE OUT

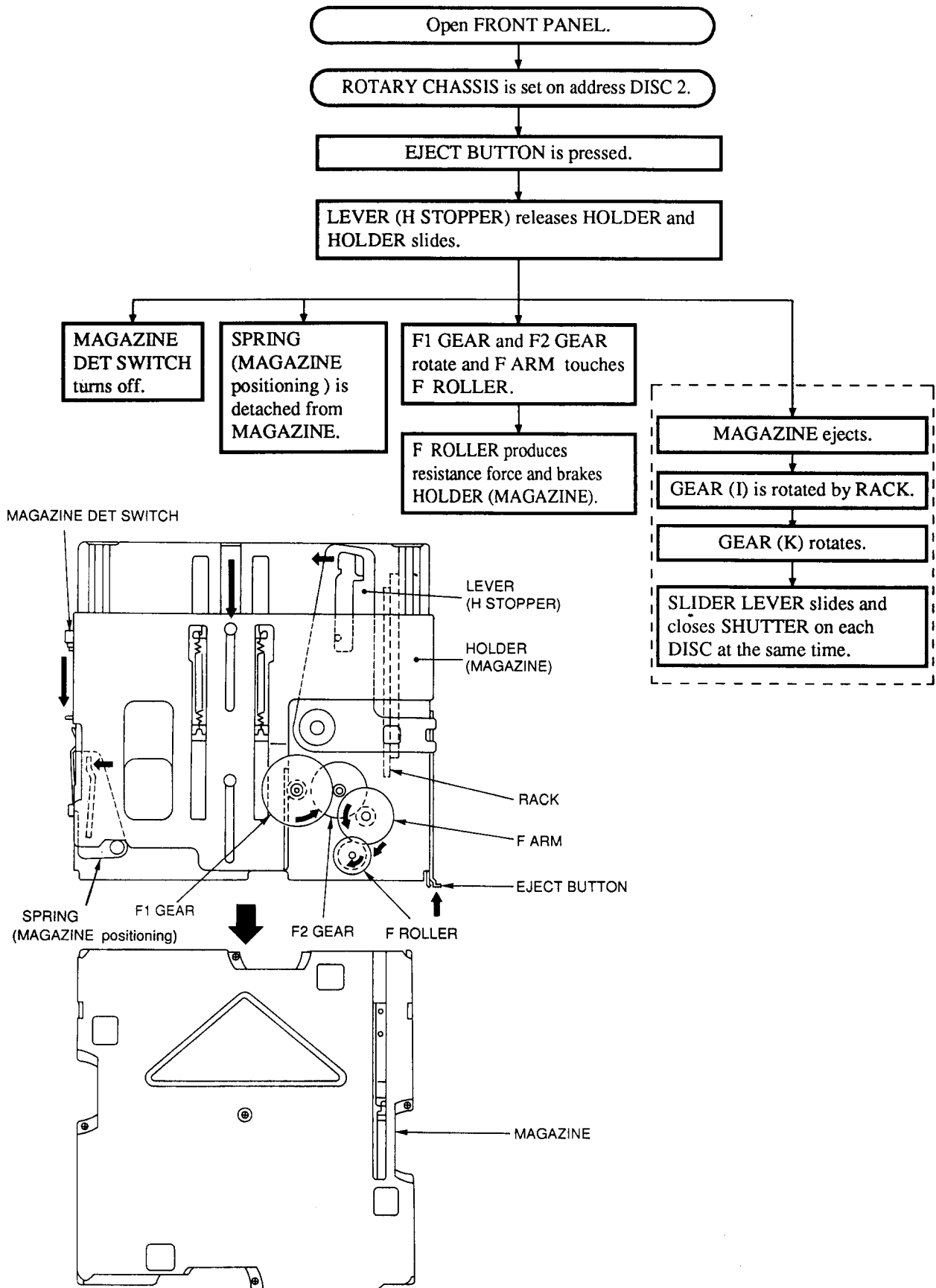


Fig.3-4

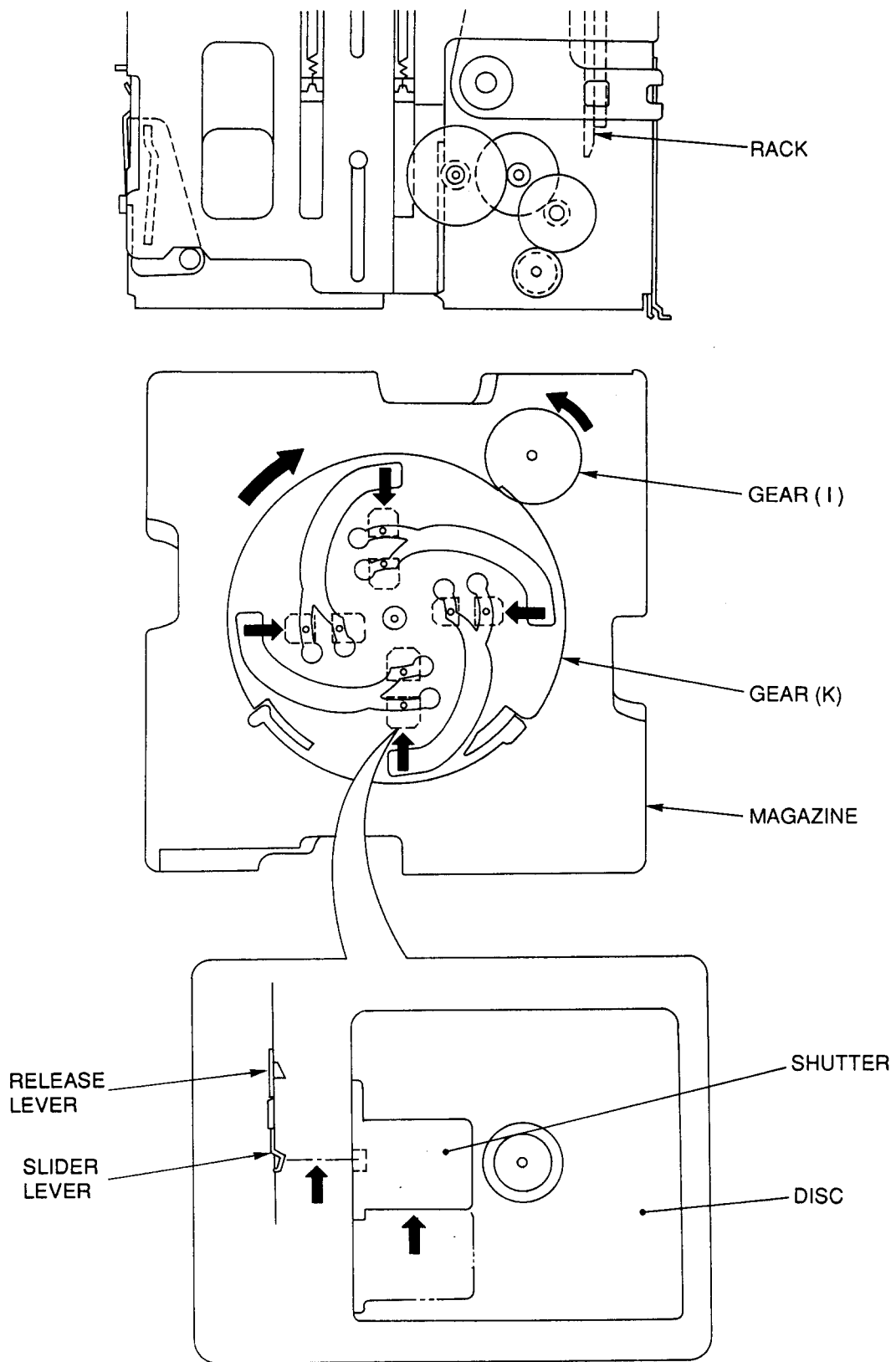


Fig. 3-5 View from bottom