

MDX-40

SONY SERVICE MANUAL

US Model
Canadian Model
AEP Model
UK Model
E Model

SUPPLEMENT-3

File the Supplement with the Service Manual and Supplement-1, 2.

Subject :
Electrical Adjustment Additional Changes.
(Page 14 of Supplement-1)

(SPM-95009)

Focus/Tracking Gain Adjustment

- Servo analyzer is needed to make this adjustment accurately.
 - Only adjust the servo gain when the pickup is replaced.
- In other cases, do not adjust the servo gain unless you have a servo analyzer.

Method of connecting to servo analyzer :

1. Disconnect the 2 soldered jumpers of TE & FE, and connect the servo analyzer as shown in the following diagram. At this time, connect IC504 to the output of servo analyzer, and the volumes to the input of servo analyzer.
2. Set the disturbance of servo analyzer at 1.2kHz, 50mV.

Procedure :

1. Insert MO disc (SONY 60 minute) in its magazine, and place it in the set.
2. Set MD (indash) test mode (See page 10).
3. Turn ON the FOCUS and CLV by pressing 1.
4. Turn on the tracking servo by pressing 2, and adjust RV507 (Tracking Gain Adjustment) and RV508 (Focus Gain Adjustment) so that both the tracking and focus become -1 ± 0.5 dB.
5. Disconnect the servo analyzer, and short the 2 soldered jumpers of TE & FE.

➡ Simple adjustment method

- When replacing the semi-fixed resistor for servo gain adjustment, set the new semi-fixed resistor to the same position as the old semi-fixed resistor, then adjust as follows.

Not using the servo gain adjustment jig

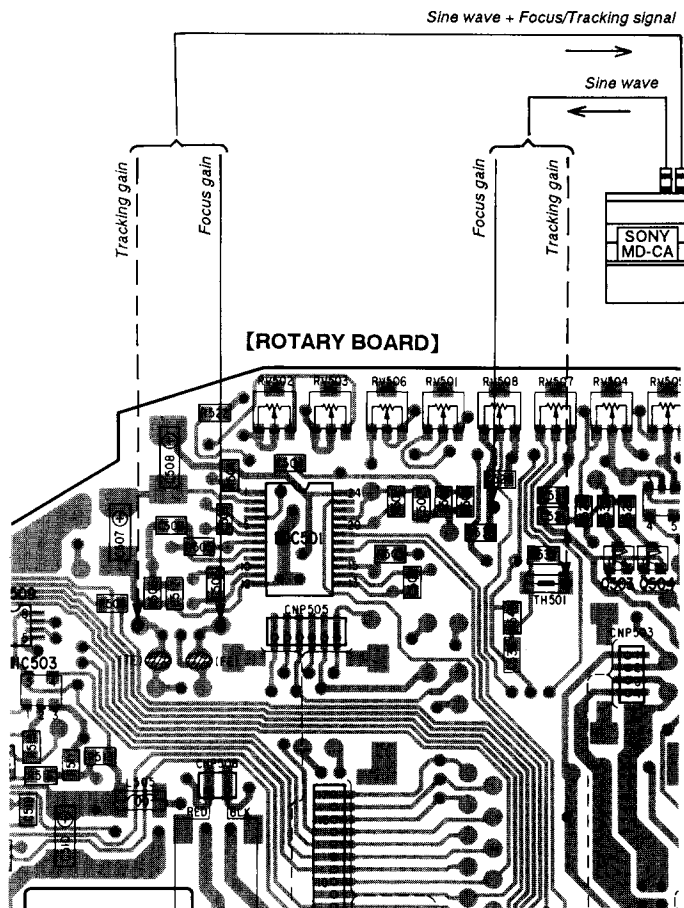
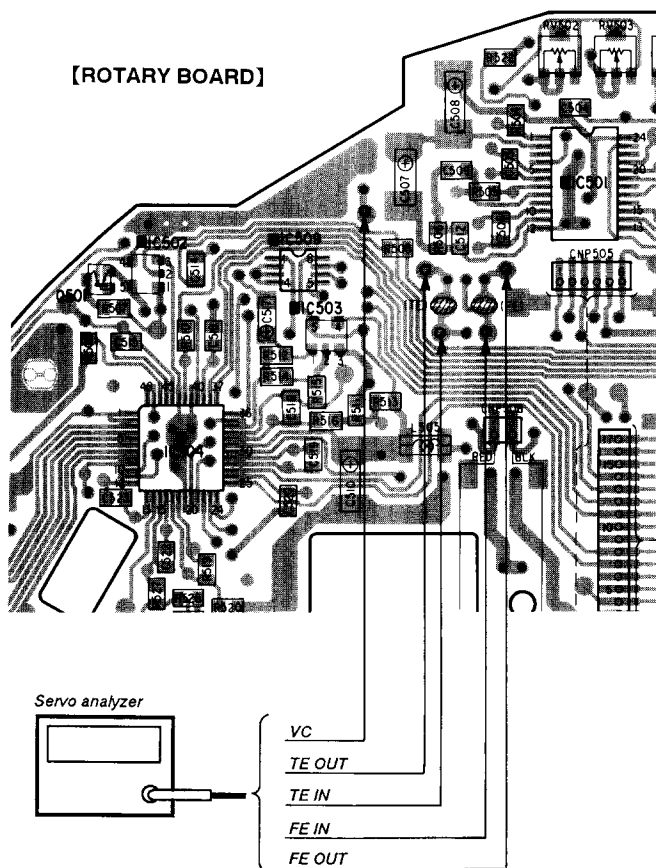
1. Focus gain adjustment
Play the 11th song of the defect disc fingerprint disc for at least 1 minute and check that not even one FOK drops out. Only if one does drop out, lower the gain so that no FOK drops out.
2. Tracking gain adjustment
Play the defect disc dot band disc and check for one minute that the servo does not lose tracking (lock drop out) on any of the tracks. Only if the lock is lost for a track, lower the gain so that the lock is not lost.

Using the servo gain adjustment jig (AEP, UK model only)

Connect the servo gain adjustment jig and adjust as follows.

1. Focus gain adjustment
Adjust RV508 so that the servo gain adjustment jig phase is 90° .
2. Tracing gain adjustment
Adjust RV507 so that the servo gain adjustment jig phase is 100° .

Note : For sets for which C538 (0.001) is not mounted, connect R540 (10K) in parallel and adjust.



Adjustment Location :

[ROTARY BOARD] (Conductor side)

