



*Net MD*  
*Simple Burner Ver. 1.2*

---

**Operating Instructions**

---

## Before using this product

This manual explains the installation and operation of the Net MD Simple Burner software when connected to a Net MD device. Refer to the other supplied manuals for details on the operation of Net MD devices and the use of the supplied SonicStage software.

---

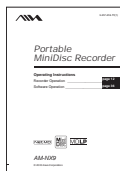
## When using the recorder (the Net MD) and the SonicStage software

### Recorder Operation

This section explains the general operation of the recorder.

### Software Operation

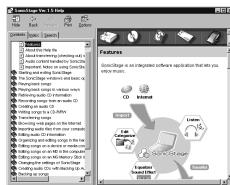
This section explains the installation and basic operations of the supplied SonicStage software.



### SonicStage Ver. 1.5 Help

This is an online help that you can view on your computer screen.

Refer to online help for details on the use of the software.

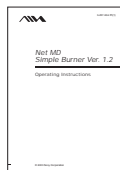


---

## When using the Net MD Simple Burner software with the recorder (Net MD).

### Net MD Simple Burner Ver.1.2 (this manual)

This manual explains the installation and the operations of the Net MD Simple Burner software.



### Notes on this manual

- The displayed items in the illustrations that appear in those manuals may differ from the actual items displayed by the software.
- Explanations in those manuals assume familiarity with basic Windows operations. For details on the use of your computer and the operating system, please refer to the respective manuals.
- Explanations in those manuals cover general Net MD products. For this reason, some explanations (and some illustrations) may not be applicable to your Net MD. Please refer to the operating instructions of your Net MD as well.

# Table of contents

---

Getting started .....	6
Using the Net MD Simple Burner software .....	6
Providing the required system environment .....	7
System requirements .....	7
Installing the software .....	8
Before installing the software .....	8
Installing Net MD Simple Burner Ver. 1.2 .....	9
Using the software for the first time .....	11
Registering with the CDDDB .....	11
Checking the reading capability of the CD-ROM drive .....	12

---

Recording .....	13
Connecting the Net MD to your computer .....	13
Recording with the DOWNLOAD button on the Net MD device (Simple Mode) .....	14
Recording by computer operations (Standard Mode) .....	15
Recording all tracks on the CD .....	15
Recording the tracks you selected from an audio CD .....	16
Editing an MD .....	19
Adding /changing names .....	19
Changing the order of tracks or groups .....	20
Erasing recorded tracks, groups, or the entire disc .....	20

---

Other information .....	21
Various settings .....	21
Setting a CD-ROM drive .....	21
Viewing version information .....	21
Viewing CDDB information .....	22
Confirming CD information registered in the CDDB .....	22
Sending CD information to the CDDB .....	22
Uninstalling the Net MD Simple Burner software .....	23
For Windows XP users .....	23
For Windows Millennium Edition/Windows 98 Second Edition users .....	23
For Windows 2000 users .....	24
Notes on system suspend/hibernation mode .....	25
Troubleshooting .....	26
If your computer does not recognize the Net MD .....	27
If the installation was not successful .....	27
Index .....	28

- Copyright laws prohibit reproducing the software or the manual accompanying it in whole or in part, or renting the software without the permission of the copyright holder.
- In no event will SONY be liable for any financial damage, or loss of profits, including claims made by third parties, arising out of the use of the software.
- In the event a problem occurs with this software as a result of defective manufacturing, SONY will replace it. However, SONY bears no other responsibility.
- The software cannot be used with equipment other than that which is so designated.
- Please note that, due to continued efforts to improve quality, the software specifications may be changed without notice.

### **Notes**

- The recorded music is limited to private use only. Use of the music beyond this limit requires permission of the copyright holders.
- Sony is not responsible for music files that cannot be saved on your computer due to unsuccessful recording from a CD or from music downloading.

- OpenMG, ATRAC, ATRAC3, ATRAC3plus, SonicStage and their logos are trademarks of Sony Corporation.
- Microsoft, Windows, Windows NT are trademarks or registered trademarks of Microsoft Corporation in the United States and/or other countries.
- IBM and PC/AT are registered trademarks of International Business Machines Corporation.
- Macintosh is a trademark of Apple Computer, Inc. in the United States and/or other countries.
- Pentium is a trademark or a registered trademark of Intel Corporation.
- Adobe and Acrobat Reader are trademarks of Adobe Systems Incorporated.
- All other trademarks are trademarks of their respective owners. <sup>TM</sup> and <sup>®</sup> marks are omitted in this manual.

Music recognition technology and related data are provided by Gracenote and the Gracenote CDDB<sup>®</sup> Music Recognition Service<sup>SM</sup>. Gracenote is the industry standard in music recognition technology and related content delivery. For more information visit [www.gracenote.com](http://www.gracenote.com).

CD and music-related data from Gracenote CDDB<sup>®</sup> Music Recognition Service<sup>SM</sup> © 2000, 2001, 2002 Gracenote. Gracenote CDDB Client Software © 2000, 2001, 2002 Gracenote, U.S. Patents Numbers #5,987,525; #6,061,680; #6,154,773, and other patents issued or pending.

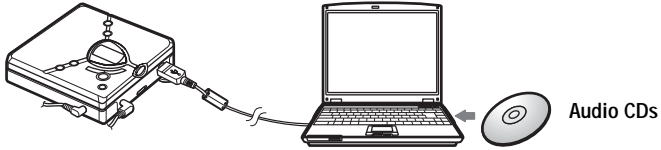
CDDB is a registered trademark of Gracenote. The Gracenote logo and logotype, the Gracenote CDDB logo and logotype, and the "Powered by Gracenote CDDB" logo are trademarks of Gracenote. Music Recognition Service and MRS are service marks of Gracenote.




Program ©2003 Sony Corporation  
Documentation ©2003 Sony Corporation

## Using the Net MD Simple Burner software

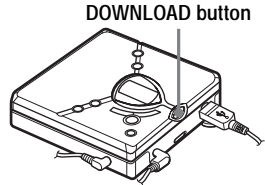
This software allows you to record music tracks from an audio CD in the CD-ROM drive of your personal computer to a Net MD.



Only audio CDs with a  mark can be used with the Net MD Simple Burner software. There are two ways to record from an audio CD.

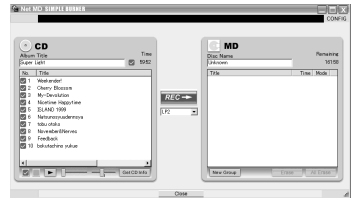
- Recording using the **DOWNLOAD** button on the Net MD device (page 14).

With this method, you can record an entire CD merely by pushing the **DOWNLOAD** button on the Net MD device. This method does not require the start up of the Net MD Simple Burner software.



- Recording through computer operations (page 15 to 18)

You can perform recording on your computer through on-screen operations of the Net MD Simple Burner software on your computer. With this method, you can also record specific tracks.



When you install the Net MD Simple Burner software, the SonicStage software is also installed. SonicStage software provides a database for managing audio data in the computer and functions for playing the audio data in various play modes, editing the data, and transferring the results to other devices and hardware connected to the computer. It is an integrated software application with a variety of functions for enjoying music. For details on the use of the SonicStage software, refer to "Software Operation" in Operating Instructions of Portable MiniDisc Recorder.

---

# Providing the required system environment

---

## System requirements

The hardware and software requirements for the Net MD Simple Burner software are as follows.

Computer	IBM PC/AT or Compatible <ul style="list-style-type: none"><li>• CPU: Pentium II 400 MHz or higher (Pentium III 450 MHz or higher is recommended.)</li><li>• Hard disk drive space: 120 MB or more (Requires additional drive space depending on the Windows version or audio file sizes.)</li><li>• RAM: 64 MB or more (128 MB or more is recommended)</li></ul>
	Others <ul style="list-style-type: none"><li>• CD-ROM drive (capable of digital playback by WDM)</li><li>• Sound Board</li><li>• USB port (supports USB (conventionally called USB 1.1))</li></ul>
Operating System	Factory installed: Windows XP Home Edition/Windows XP Professional/Windows Millennium Edition/Windows 2000 Professional/Windows 98 Second Edition
Display	High Color (16bit) or higher, 800 × 480 dots or better (800 × 600 dots or better is recommended)
Others	• Internet access: For CDDDB <sup>1)</sup> service

<sup>1)</sup> For details, see page 11, 22.

This software is not supported by the following environments:

- Macintosh
- Windows XP versions other than Home Edition or Professional
- Windows 2000 versions other than Professional
- Windows 98 versions other than Second Edition
- Windows NT
- Windows 95
- Personally constructed PCs or operating systems
- An environment that is an upgrade of the original manufacturer-installed operating system
- Multi-boot environment
- Multi-monitor environment

### Notes

- We do not ensure trouble-free operation on all computers that satisfy the system requirements.
- We do not ensure trouble-free operation of the system suspend, sleep, or hibernation function on all computers.

---

## Installing the software

Install the Net MD Simple Burner software on the hard disc drive of your computer using the supplied CD-ROM.

SonicStage Ver. 1.5 is also installed when you install Net MD Simple Burner Ver. 1.2.

---

### Before installing the software

#### 1 Make sure to note the following before installing the software.



**Do not connect the dedicated USB cable before the installation!**

The Net MD Simple Burner software may not correctly load or operate if the dedicated USB cable is connected to your computer during the installation.



**Close all other Windows applications before starting the installation!**

Make sure to close any virus-check software, as such software usually demand large amounts of system resources.

#### 2 If your OS is Windows XP or Windows 2000, read the following notes before installing the software.

<b>Windows XP</b>	<ul style="list-style-type: none"><li>• To install the Net MD Simple Burner software, you must log on with a user name with “Computer Administrator”.</li><li>• If you perform the “System Restore” function in the Windows “System Tools” menu, the tracks managed by SonicStage may become corrupted and rendered unplayable.</li></ul>
<b>Windows 2000</b>	<ul style="list-style-type: none"><li>• You must log on as “Administrator” before installing the Net MD Simple Burner software.</li></ul>



---

## Installing Net MD Simple Burner Ver. 1.2

SonicStage Ver. 1.5 is also installed when you install Net MD Simple Burner Ver. 1.2.

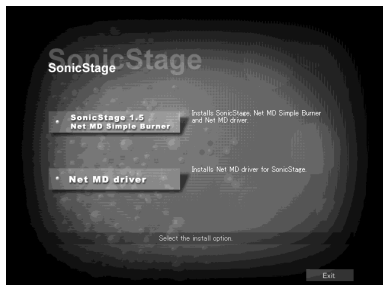
---

1 Turn on your computer and start up Windows.

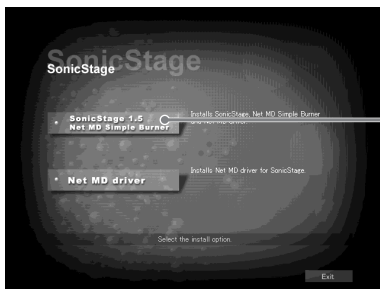
---

2 Insert the installation CD-ROM into the CD-ROM drive of your computer.

The setup program starts up automatically and the installation window appears.



3 Click to select [SonicStage 1.5 · Net MD Simple Burner].



Click here.

4 Follow the displayed instructions.

Read the instructions carefully. The installation may take 20 to 30 minutes.

---

---

5 After the installation is completed, click [Restart] to restart the computer.  
Make sure to restart your computer only after the installation has completed.

---

Was the installation successful?

If any trouble occurs during the installation, see “Troubleshooting” (page 26).



After you installed the software, the software’s icon will appear in the task tray the next time you start up your computer.

**Notes**

- Do not delete, move, or edit any of the installed folders using Explorer or any other application. Doing so could cause the Net MD Simple Burner software to become unstable or corrupted.
- While the installation is still in progress, do not interrupt the operation or take the CD-ROM out of the CD-ROM drive. Doing so may render it impossible to install the software thereafter.

---

## Using the software for the first time

---

### Registering with the CDDB

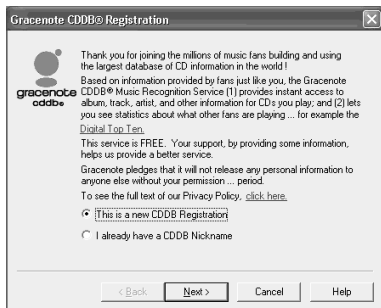
The Gracenote CDDB is the Internet service for audio data recognition. A number of album names, artist names, track names, etc. have been registered on this data base. When you connect your computer to the Internet and use the Net MD Simple Burner, your computer will search the CDDB automatically when you insert an audio CD into the CD-ROM drive. The computer imports CD information such as album names to the hard disc and displays this information. This is more convenient than inputting album names, track names, etc. using the keyboard.

To use the CD information on the CDDB, register with the CDDB following the instructions that appear when you start the Net MD Simple Burner for the first time.

#### Note

To use the Gracenote CDDB service, you have to register with Gracenote CDDB. The registration is done between the Client and the Gracenote CDDB. Sony assumes no responsibility for this matter.

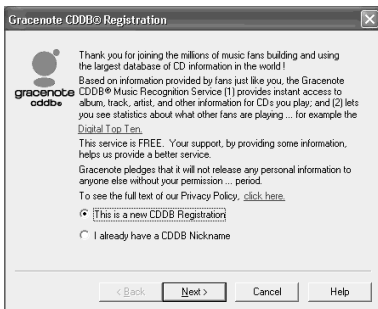
- 
- 1 Insert the installation CD-ROM into the CD-ROM drive of your computer (page 12).



The CDDB registration window appears when you use the CDDB for the first time.

---

## 2 Select [This is a new CDDB Registration] and click [Next].



---

## 3 Follow the instructions that appear in the window.

---

## 4 Click [Finish].

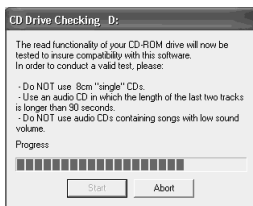


Registration with the CDDB has been completed.

---

## Checking the reading capability of the CD-ROM drive

Click [Start].



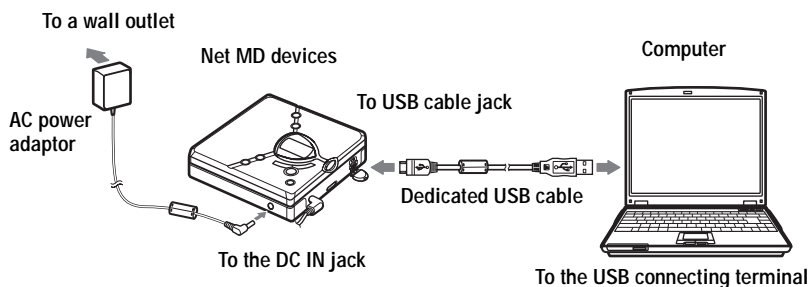
The first time you use the software, do a check to confirm that the drive connected to your computer is able to read audio data properly.

Make sure to check your CD-ROM drive.

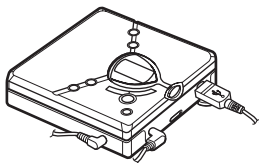
## Connecting the Net MD to your computer

Refer to the operating instructions of the Net MD as well.

- 1 Insert a recordable disc into the Net MD.
- 2 Make the power source and the dedicated USB cable connections with the Net MD and the computer.



- 3 Check the connections.



When the connections have been properly made, "PC→MD" appears in the display.

### Note

When using the Net MD connected to your computer, it is recommended that you run the recorder from an AC outlet. If you use a battery to run the Net MD, be sure to use a new dry battery. We do not assure the integrity of the recorded contents in the event of a malfunction, recording failure, or loss of audio data caused by a weak battery.

---

## Recording with the DOWNLOAD button on the Net MD device (Simple Mode)

You can record the entire contents of a CD by merely pressing the DOWNLOAD button on the Net MD device, without starting up the Net MD Simple Burner software.

---

1 Insert the audio CD that you want to record into the CD-ROM drive of your computer.

The DOWNLOAD button on the Net MD device lights up.

---

2 Press and hold the DOWNLOAD button on the Net MD device for about 2 seconds.


The recording starts.

All tracks on the CD are recorded as a new group.


---

To stop recording


Click  Abort .

While the first track is being recorded, you can use  (stop) button to stop on the Net MD device.

Setting the recording mode (page 15)

Before starting recording, right-click the  Net MD Simple Burner icon in the task tray, and then select [LP2] or [LP4] in [recording mode].

Setting when the CDDB has more than one item of information

Right-click the  Net MD Simple Burner icon in the task tray, and then select the setting by clicking [CDDB(r)] - [Multiple Matches].

- User Selection: A selection window is displayed
- No Resolve: No CD information is downloaded
- First Choice: The first item is downloaded

### Note



The DOWNLOAD button cannot be used for recording when the Net MD Simple Burner or the OpenMG software (SonicStage, OpenMG Jukebox, etc.) is active.

---

## Recording by computer operations (Standard Mode)

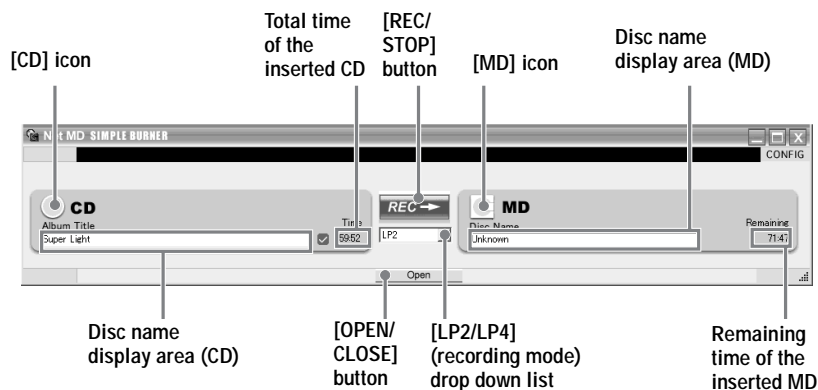
You can record using the Net MD Simple Burner software operations on your computer. This method allows you to record all tracks or specified tracks.

There are three ways to start up the Net MD Simple Burner Software:

- Double-click the  Net MD Simple Burner icon in the task tray, or right-click and select [Show Classic Window].
- Double-click the  Net MD Simple Burner icon on the desktop.
- Click [Start] - [Programs] - [Net MD Simple Burner] - [Net MD Simple Burner].

---

### Recording all tracks on the CD



- 
- 1 Insert the audio CD that you want to record into the CD-ROM drive of your computer.
  - 2 Select the recording mode from [LP2/LP4] drop down list on the middle of the window.

Recording mode <sup>1)</sup>	Drop down list	Recording time <sup>2)</sup>
LP2 stereo	LP2	Approx. 160 min.
LP4 stereo	LP4	Approx. 320 min.

<sup>1)</sup> For better sound quality, record in LP2 stereo mode.

<sup>2)</sup> When using an 80-minute recordable MD

3 Click  .

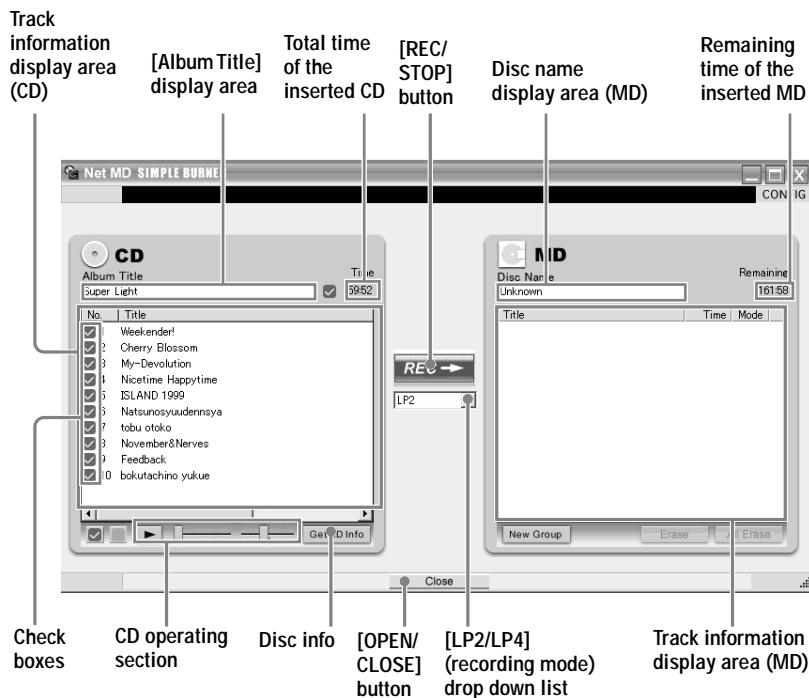
The recording starts.

All tracks on the CD are recorded as a new group.

To stop recording

Click  .

## Recording the tracks you selected from an audio CD



1 Insert the audio CD that you want to record into the CD-ROM drive of your computer.



---

## 2 Click [OPEN].

A detailed window appears.

---

## 3 Click the check boxes\* of the tracks you do not want to record so that the check marks disappear from the boxes.

---

## 4 Select the recording mode from [LP2/LP4] drop down list on the middle of the window.

Recording mode <sup>1)</sup>	Drop down list	Recording time <sup>2)</sup>
LP2 stereo	LP2	Approx. 160 min.
LP4 stereo	LP4	Approx. 320 min.

<sup>1)</sup> For better sound quality, record in LP2 stereo mode.

<sup>2)</sup> When using an 80-minute recordable MD

---

## 5 Click .

---

\* Clicking  to the left below the window selects all tracks. Clicking  deselects all tracks.

### To stop recording


Click .

### Listening to an audio CD

Click  in the CD operation section.

This function is convenient for checking tracks before recording them.

While the CD is playing, you can play a track by clicking its title.

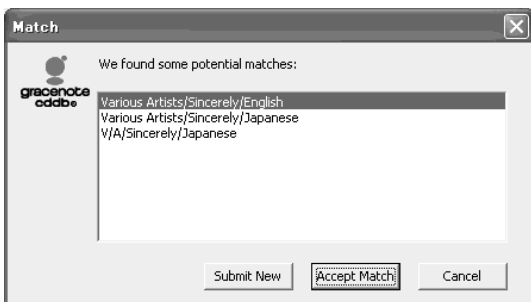
To stop playback, click .

## Getting CDDB information on CDs

After completing the CDDB registration (page 11), you can automatically obtain album information for an audio CD merely by connecting to the Internet while the CD is inserted in your computer's CD-ROM drive. When the audio CD is recorded to an MD, the CD information data from the CDDB is also recorded to the MD.

To register for CDDB service, click [Get CD Info].

If there is more than one item of information in the CDDB, the following window appears.



Select the type of information you want and click [Accept Match].


Once you have selected the type of information, CD information satisfying the match is displayed automatically when you insert a CD into the CD-ROM drive.

## Labeling an album or track

Double-click [Album Title] display area to enter an album name for the disc.

Double-click the title of a track to enter a track name.

## Quitting the Net MD Simple Burner software

Click  in the upper-right corner of the window.

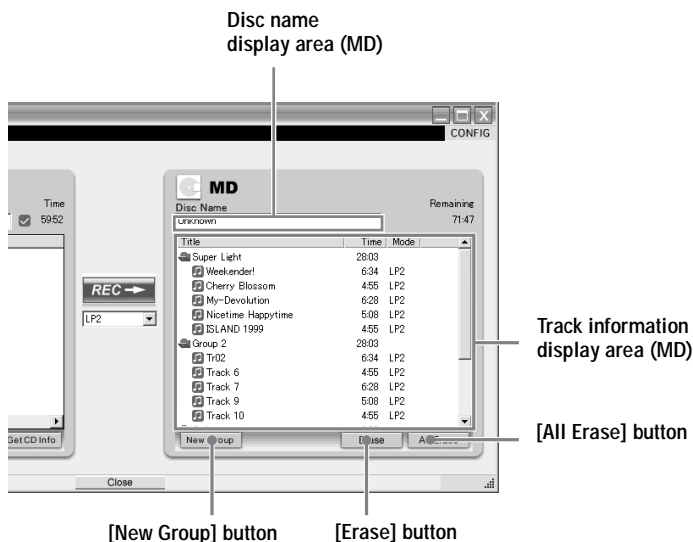
### Notes

- A key mark will appear to the left of the [MD] icon when the MD is write-protected.
- Make sure not to disconnect the dedicated USB cable while recording.
- Recording may not occur if there is less than 250MB of space available on the hard disc drive.
- The remaining time indicated for the inserted MD is approximate.

---

## Editing an MD

You can edit MDs with the Net MD Simple Burner window.



---

## Adding /changing names

Maximum number of characters per name

Track names, group names, and disc name: Approx. 200 each (containing a mixture of all available characters)

Maximum number of characters that can be input per disc

Alphanumeric characters and symbols only: Approx. 120 titles of about 10 characters each (a maximum of about 1,700 characters)

The number of titles that can be stored on a disc depends on the number of characters that are input for track names, group names, and disc name.

Adding track and group names

Double-click the name of the track or group that you want to change.

Adding disc names

Position the cursor in the disc name area (MD), and type the name.

---

## Changing the order of tracks or groups

Click and select the track or group you want to change, and drag and drop it to the destination point on the display.

### **Note**

If you drag the cursor to a place where dropping is disabled, the cursor changed to .

---

## Erasing recorded tracks, groups, or the entire disc

**Note that once a recording has been erased, it cannot be recovered. Be sure to check the contents before you erase.**

### Erasing tracks or groups

Click and select the track or group you want to erase, and click [Erase].

If you delete groups, all tracks in the group are erased.

### Erasing the entire disc

Click [All Erase].

### **Notes**


- The Net MD Simple Burner software can be used to erase tracks that are protected by Track Protect, a function that protects copyright privileges. If the MD contains tracks that have been checked-out using SonicStage, etc, please be careful not to erase them by mistake.
- Do not use the Net MD software, such as SonicStage to check-in tracks that have been recorded by Net MD Simple Burner. If you do, the checked-in tracks will be erased.

### Creating a new group

Click [New Group].

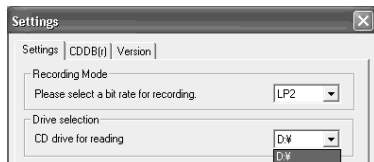
A new group is added at the end of the current contents.

Up to 99 groups can be created on a disc.

**Before removing the disc from the Net MD device, press the  (stop) button on the Net MD, and make sure "TOC Edit" no longer appears in the display.**

## Various settings

### Setting a CD-ROM drive

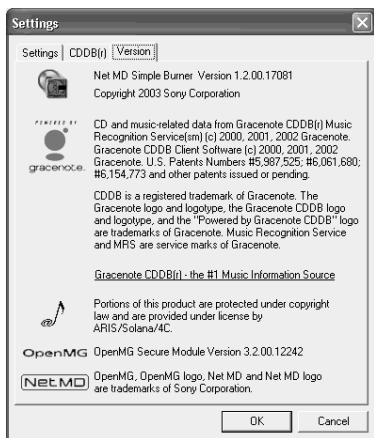


- 1 Click CONFIG on the right of the window.
- 2 Click [Settings] tab.
- 3 Click ▼ and select a drive.
- 4 Click [OK].

#### Note

If you select a new drive setting, click [OK] and close the Settings window before starting the drive check. The setting is changed when you click [OK].

### Viewing version information



- 1 Click CONFIG on the right of the window.
- 2 Click [Version] tab.  
Version information of the Net MD Simple Burner on your computer appears.
- 3 Click [OK] after you confirm the version.

---

## Viewing CDDB information

---

### Confirming CD information registered in the CDDB

- 1 Click CONFIG on the right of the window.
- 2 Click [CDDB(r)] tab.
- 3 Click [Display].  
The Gracernote CDDB window appears.
- 4 Click [OK] after you confirm the version.

---

### Sending CD information to the CDDB

- 1 Click CONFIG on the right of the window.
- 2 Click [CDDB(r)] tab.
- 3 Click [Submit].  
The Gracernote CDDB window appears.
- 4 Click [Help/Guidline] and edit the information following the displayed instructions.
- 5 Click [OK] to send the information.

---

## Uninstalling the Net MD Simple Burner software

To uninstall the Net MD Simple Burner software, follow the procedures below.

---

### For Windows XP users

Log on with a user name with “Computer Administrator” as an attribute. Refer to the operating instructions of your computer for details on logging on as an administrator.

- 
- 1 Click [Start]–[Control Panel].  
The “Control Panel” window appears.

---

  - 2 Double-click [Add/Remove Programs].  
The “Add/Remove Programs” dialog box appears.

---

  - 3 Click [Change or Remove Programs].

---

  - 4 Click [Net MD Simple Burner] in the “Currently Installed Programs” list, and then click [Change and Remove].  
Do as instructed by the message and restart the computer. When the computer restarts, the uninstallation will be completed.
- 

---

### For Windows Millennium Edition/Windows 98 Second Edition users

- 
- 1 Click [Start]–[Settings]–[Control Panel].  
The “Control Panel” window appears.

---

  - 2 Double-click [Add/Remove Programs].  
The Add/Remove Programs Properties window appears.

continued

- 
- 3 Click [Net MD Simple Burner] in the list of programs for automatic removal, and then click [Add/Remove].

Do as instructed by the message and restart the computer. When the computer restarts, the uninstallation will be completed.

---

---

## **For Windows 2000 users**

Log on as “Administrator”, and then follow the instructions below.

Refer to the operating instructions of your computer for details on logging on as an administrator.

---

- 1 Click [Start]–[Settings]–[Control Panel].

The “Control Panel” window appears.

---

- 2 Double-click [Add/Remove Programs].

The “Add/Remove Programs” dialog box appears.

---

- 3 Click [Change or Remove Programs].
- 

- 4 Click [Net MD Simple Burner] in the “Currently Installed Programs” list, and then click [Change/Remove].

Do as instructed by the message and restart the computer. When the computer restarts, the uninstallation will be completed.

---



---

## Notes on system suspend/hibernation mode

- If the computer changes to system suspend/hibernation mode during the recording of a CD or the checking in/out of a data file, the audio data may be lost or the computer may not wake up properly. The computer suspend/hibernation function should therefore be turned off.
- If you change the media while the computer is in system suspend/hibernation mode, audio data may be lost after the computer wakes up.
- If the computer changes to system suspend/hibernation mode, the computer may not recognize the Net MD when it wakes up. If this happens, disconnect the dedicated USB cable and reconnect it again.

---

## Troubleshooting

Please do the following steps if you encounter a problem while using the Net MD Simple Burner software. In case a message appears, it is recommended that you write it down.

### **Step 1: Check the symptoms in this manual.**

Check this “Troubleshooting” section for the applicable items.

### **Step 2: If the trouble cannot be solved after checking the above references.**

Check the following table and then consult your nearest Aiwa dealer.

---

## If your computer does not recognize the Net MD

- **Is the Net MD connected correctly to your computer?**

- If the Net MD is not firmly connected to the computer, the Net MD will not be recognized by your computer.
- Reconnect the dedicated USB cable. If the computer still does not recognize the Net MD, disconnect the Net MD, restart the computer, and connect the dedicated USB cable again.

- **Is an MD inserted in the Net MD?**

Check if an MD is inserted in the Net MD.

- **If your computer does not recognize your Net MD even when the Net MD is connected and a disc is inserted, the Net MD driver may not be correctly installed.**

Go to the [USB Controller] in the Windows Device Manager window to verify that your Net MD is correctly recognized.

A [!] mark in the Device Manager window indicates that your Net MD is not correctly recognized. Reinstall the Net MD driver.

**1** Click [Start]–[[Settings]]–[Control Panel].<sup>1)</sup>

**2** Double-click [System] in the control panel.<sup>2)</sup>

**3** Click the [Hardware]<sup>3)</sup> tab, and then click [Device Manager].

The Device Manager window appears.

<sup>1)</sup> In Windows XP, select [Start]–[Control Panel].

<sup>2)</sup> In Windows XP, double-click [System] if the control panel is in the “classic” format, or click [Performance and Maintenance] and then [System] if the control panel is in the “category” format.

<sup>3)</sup> Depending on your system, the [Hardware] tab may not be provided. In this case, click the [Device Manager] tab to display the Device Manager window.

---

## If the installation was not successful

- **Be sure to close all Windows applications before you start the installation.**

If you start the installation while other programs are running, a malfunction may occur. This is especially true for programs that require large amounts of system resources, such as virus-check software.

- **Make sure your computer has enough hard disk drive space.**

120MB of free space or more on the hard disk drive is required. If your computer does not have enough space, the installation may not be possible.

### **Note**

When removing an external CD drive (PC (PCMCIA) card, USB, iLINK) from your computer, a warning may appear on your computer screen when you click the [Remove hardware safely] icon. If this happens, right-click the [Net MD Simple Burner] icon to end the application. Then remove the external CD-ROM drive.

---

## Index

### A

Audio CD 6, 14

### C

CDDB 11, 14, 18, 22

CD-ROM 7

Connecting 13

### D

delete (software) 23

DOWNLOAD button 6, 14

### E

Editing 18, 19

Erasing 20

### G

group 19

### H

hard disk

    free space 7

### I

Installing 9

### N

Net MD 6

Net MD driver 27

### O

Open MG Jukebox 14

### R

Recording 13

recording mode 14, 17

### S

Simple Mode 14

SonicStage 2

Standard Mode 15

start up 15

suspend/hibernation mode 25

System environment 7

System limitations 7

### U

Uninstalling

    Windows 2000 24

    Windows 98 Second Edition 23

    Windows Millennium Edition 23

    Windows XP 23

USB cable 8, 13

### V

version 21

### W

Windows 2000 8, 24

Windows 98 Second Edition 23

Windows Millennium Edition 23

Windows XP 8, 23

<p>Computer</p> <ul style="list-style-type: none"> <li>• Manufacturer:</li> <li>• Model:</li> <li>• Type: Desktop type / Laptop type</li> </ul>
Name of operating system:
RAM capacity:
<p>Hard disk drive (containing Net MD Simple Burner and audio data)</p> <ul style="list-style-type: none"> <li>• Capacity of the drive:</li> <li>• Free space:</li> </ul>
<p>Installed folder containing Net MD Simple Burner (if other than the default folder)<sup>1)</sup></p> <ul style="list-style-type: none"> <li>• Location of the installed folder:</li> </ul>
Version of the software (Net MD Simple Burner Ver.1.2) <sup>2)</sup> :
Error Message (if one appeared):
<p>If an externally connected CD-ROM drive is used</p> <ul style="list-style-type: none"> <li>• Manufacturer:</li> <li>• Model:</li> <li>• Type: CD-ROM / CD-R/RW / DVD-ROM / Other (                    )</li> <li>• Type of connection to the computer: PC card / USB / IEEE1394 / Other (                    )</li> </ul>
<p>If another device with USB connection is used</p> <ul style="list-style-type: none"> <li>• Name of the device (or devices):</li> </ul>

<sup>1)</sup> If you do not specify the destination, the software is installed at C:\Program Files\Sony\Net MD Simple Burner.

<sup>2)</sup> To check the Net MD Simple Burner software version, go to [Settings] - [Net MD Simple Burner] in the Net MD Simple Burner window, or see the version information on the supplied CD-ROM.





