

M-crew

Operating Instructions _____	GB
Mode d'emploi _____	FR
Manual de instrucciones _____	ES
Bedienungsanleitung _____	DE
Gebruiksaanwijzing _____	NL
Istruzioni per l'uso _____	IT
Bruksanvisning _____	SE
Instrukcja obsługi _____	PL
Brugsanvisning _____	DK
Käytöohjeet _____	FI
Instruções de operação _____	PT
使用説明書 _____	CT

- Duplication of any or all of the contents of this software and instruction manual or lending of this software to third parties without the express permission of the copyright holder is strictly prohibited by copyright law.
- Sony cannot be held liable in any way for monetary losses, lost profits or claims from third parties arising from the use of this software.
- Should any manufacturing defects occur, Sony's responsibility shall be limited solely to replacing said defective merchandise.
- This software is approved for use only with the specified equipment.
- Sony reserves the right to change software specifications without prior notice. Other related software and services provided are also subject to change without prior notice.

Program © 1997-2002 Sony Corporation
 Documentation © 2002 Sony Corporation
 © 2002 Sony Corporation All rights reserved.


- M-crew, LabelMaker and  are the registered trademarks of Sony Corporation.
- Microsoft, MS-DOS and Windows are the registered trademarks of Microsoft Corporation.
- IBM and PC/AT are the registered trademarks of International Business Machines Corporation.
- Macintosh is the registered trademark of Apple Computer Inc.
- Adobe and Acrobat are the trademarks of Adobe Systems Incorporated.
- All other trademarks are trademarks of their respective owners. TM and ® marks are omitted in this manual.

Table of contents

Getting started

Overview	4
System requirements	5

Preparation

1: Installing M-crew	7
2: Connections	10
3: Setup procedure for your computer	
system	10
Setting up for Windows 98SE	11
Setting up for Windows 2000/ Windows Me/ Windows XP	13
When no sound comes out of the computer	17
Installing LabelMaker 5.1	18
Uninstalling the software	19

Basic Operations

Starting up M-crew	20
Using M-crew	21
Main bar	21
Tool bar	23
Operation windows	24
Easy Mode window	24
Quitting the software	25

Additional Information

Using Help	26
Troubleshooting	27

About this manual

- This manual shows how to install the M-crew software and how to use the Help.
- For the latest information, refer to the “Readme.txt” file in the Start menu.
The “Readme.txt” file is in the folder which the M-crew software is installed in.
- The displayed items in the illustrations that appear in this manual may differ from the actual items displayed by the software.
- Explanations in this manual assume familiarity with basic Windows operations. For details on the use of your computer and the operating system, please refer to the respective manuals.

GB

Overview

M-crew (Ver.2.1E) allows you to control Sony system stereo components. Through M-crew, you can perform the functions listed below.

Playback

- Use the computer to operate the playback function on CD and MD.
- Enjoy audio files stored on the computer.
- Tune in radio stations using the computer.

Recording/editing

- Input disc and track names from the computer keyboard.
- Edit MDs on the computer screen.
- Record from a CD to an MD through easy drag-and-drop operations.
- Record easily from a radio to an MD.
- Organize tracks on an MD into groups of your choice.

Other operations

- Create virtual media for the management of audio files.
- Keep track of played and recorded tracks through a Disc Library.
- Access related websites while enjoying tracks.
- Register images to attach them to a track and view them while listening to the track (CLIP function).
- Access related websites while enjoying radio programs.
- Set playback and recording timers.
- Use the Easy Mode window to access easily to the basic functions of M-crew.
- Print out MD labels.

Notes

- In this manual, the term “system stereo component” refers specifically to component stereo systems (incorporating CD and MD decks) and discrete CD and MD.
- The M-crew functions that operate on your computer will depend on the system stereo component connected to your computer.
- You can use this software to operate only system stereo components connected directly to the computer.
- M-crew does not support use by multiple users.
- Do not operate the system stereo component while M-crew is being used for operations such as MD editing or reloading. The M-crew may not be activated properly.
- Some audio files may not play properly.
- It is not possible to set +12.9 dB for the MD’s REC Level Adjust from the application.

System requirements

The following hardware and software are necessary to use the M-crew (Ver.2.1E) software.

- IBM PC/AT or compatible (This software does not run on the Apple Macintosh.)
- CPU*¹: Intel Pentium II 400 MHz/Celeron 433 MHz or higher
- Video board and display driver: SVGA (800 × 600 pixels), 65,536 colors or more
- Hard disk space: 35 MB*² or more
- USB port: 1 or more
- OS: Windows 98SE/Windows 2000 Professional*³/
Windows Me/Windows XP Home Edition*⁴/Windows XP Professional*⁴ (This software does not run on Microsoft Windows 3.1, Windows NT, Windows 95 or Windows 98.)
- Media player: Windows Media Player 6.4 or higher and Microsoft Internet Explorer 4.0 or higher or Netscape Communicator 4.0 or higher are required in order to play music files on the computer.
- WEB RADIO (CMT-M333NT only): Microsoft Internet Explorer setting and Internet access are required in order to play WEB RADIO.
- Video monitor: SVGA (800 × 600 pixels), 65,536 colors or more

*¹ The operation of M-crew is not guaranteed on some computers with Pentium-compatible CPU chips, such as the AMD K6 (e.g., sound skipping may occur during playing of an audio file).

*² Another 20 MB of hard disk space is required to install LabelMaker 5.1. Only the English version LabelMaker 5.1 is supplied.

*³ Be sure to log on through the administrator's account to install the software and setup devices on a computer running Windows 2000.

*⁴ Be sure to log on through a user name which belongs to the computer's administrator to install the software and setup devices on a computer running Windows XP.

(continued)

Notes

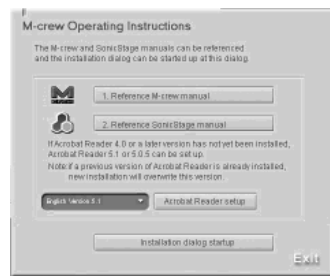
- The proper operation of M-crew is not guaranteed on some computers even if they meet the requirements above.
- The proper operation of M-crew is not guaranteed on computers that you constructed yourself or on computers with an operating system that you upgraded yourself.
- Do not use a USB hub. If multiple USB devices are connected to the hub, M-crew may not operate the system stereo component connected to the computer properly.
- This software can be used only with an English-language and French-language operating system. If used in a different language environment, it may not function properly or text may not be correctly displayed.

1: Installing M-crew

Use this procedure to install the M-crew software onto your computer's hard disk. Be sure to start up Windows in advance.


- **Be sure to install this software before connecting the system stereo component to your computer. If not, this software may not function properly.**
- **Be sure to log on through the administrator's account to install this software (for Windows 2000).**
- **Be sure to log on through a user name which belongs to the computer's administrator to install this software (for Windows XP).**

- 1** Insert the supplied CD-ROM into the CD-ROM drive of your computer.



The “M-crew Operating Instructions” dialog box appears.


Note

If the dialog box does not open, double-click the CD-ROM  (ManualDlg.exe) icon.

- 2** Click [Installation dialog startup].

The “M-crew Set Up” dialog box appears.

Note

If the dialog box does not open, double-click the CD-ROM  (InstallDlg.exe) icon.

- 3** Select your system stereo component.

- Even if you are currently using the PCLK-MN10/MN10A and/or you have already installed PCLK USB driver onto your computer, be sure to complete all steps 1 to 8.
- If you are installing M-crew onto a computer with CMT-C7NT connected, be sure to complete all steps 1 to 8, even if you are using the PCLK-MN10/MN10A.

- 4** Click [1. M-crew setup] in the setup window.

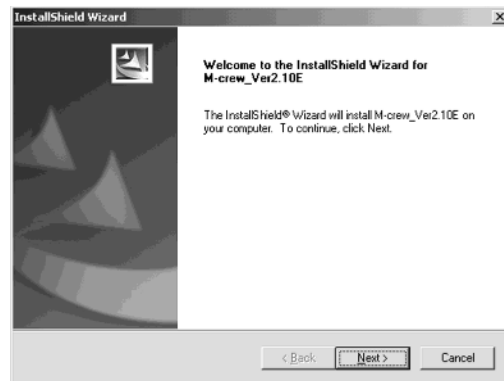
The setup program starts up.



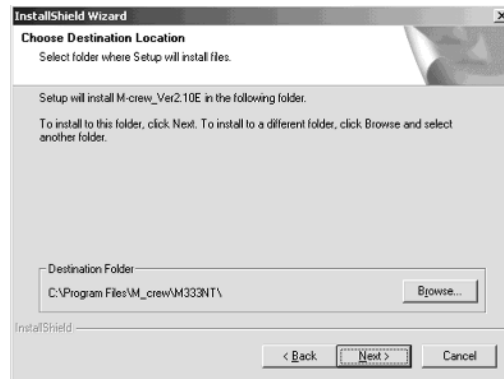
Note

The Windows Installer is necessary to install M-crew. If the Windows Installer is not installed on your computer, the following window appears. If this happens, click [Restart] to restart your computer. When you restart your computer, do not remove the CD-ROM.

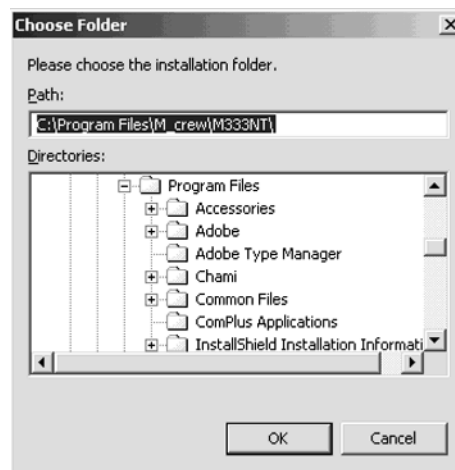
5 Click [Next].



6 Select the folder to install, and then click [Next].
The installation starts.

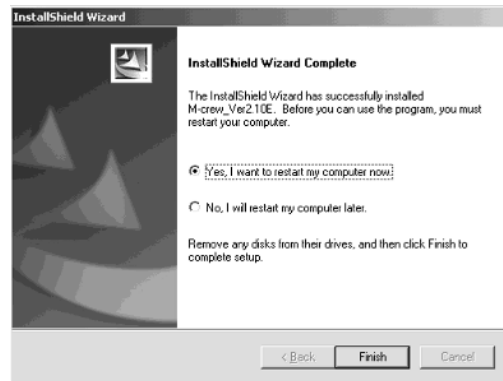


To change the folder to install, click [Browse] button.



To change the folder to install M-crew, click [OK] after specifying the folder.

- 7** When the dialog box indicating the completion of the installation appears, click [Finish].



- 8** Click [2. PCLK-USB Driver setup] in the setup window. The installation of the driver starts. When the dialog box indicating the completion of the installation appears, click [Finish]. This completes the setup process. Be sure to restart the computer. If not, the software will not function properly. Be sure to close the dialog box activated by executing InstallDlg.exe before connecting the system stereo component to the computer. Install supplied SonicStage or label printing software if needed. Now, you can proceed to the next preparation steps: connecting the system stereo component to the computer, installing the USB drivers, and then verifying the status of the installed devices according to the procedures described on the following pages.

Before starting M-crew

Open the “Readme” file and read it.

To open the “Readme” file, go to the Start menu and select [Programs] and [M-crew for CMT-M333NT], and then click [Readme]. (For CMT-C7NT, select [Programs] and [M-crew], and then click [Readme].)

Notes

- A folder is created as a result of the installation. This folder is used by the software. Do not erase, move, or change its contents.
- If the required driver and other items have already been installed, a dialog box for your confirmation will appear during the installation.

2: Connections

For information on connecting the system stereo component to the computer, refer to the operating instructions for the system stereo component.

3: Setup procedure for your computer system

Be sure to check the status of the installed devices before you start up M-crew. The following procedure is for Windows 98SE. Some parts of the procedure may differ depending on which operating system you have installed the software in. See page 13 for Windows 2000/Windows Me/Windows XP.

Note

Some illustrations included in the following procedures may differ partly depending on which operating system your computer is running.

Setting up for Windows 98SE

Installing the USB driver

- 1** Connect the system stereo component to the computer directly and then start up the computer.
Quit any applications that are active.
“Add New Hardware Wizard” appears.
- 2** Click [Next].
- 3** Select “Search for the best driver for your device. (Recommended).” (For the computer system with the CMT-C7NT connected to it, refer to the operating instructions for that system stereo component.)
Load the Windows 98SE CD-ROM into the CD-ROM drive of the computer if the wizard requests it, and then install the drivers. Installation procedure will be repeated for each of the following devices.
 - USB audio device
 - USB composite device
 - Generic USB hub

Note

Net MD driver is installed simultaneously with SonicStage (Ver.1.5).

Verifying the status of the installed devices

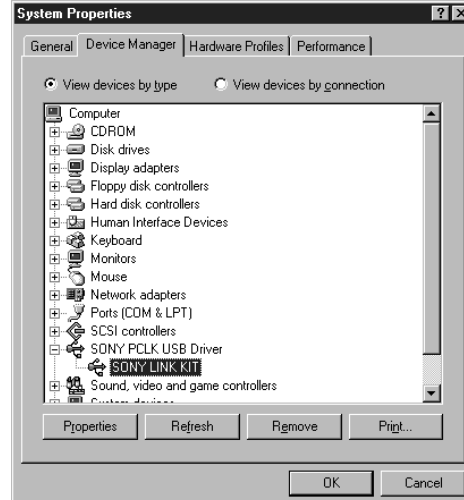
Be sure to check the status of the installed devices after you have installed their drivers.

- 1** Open the [Control Panel].
In the Start menu, point to [Settings] and click [Control Panel].
- 2** Double-click the [System] icon.
The “System Properties” dialog box appears.
- 3** Click the [Device Manager] tab. (For the computer system with the CMT-C7NT connected to it, refer to the operating instructions for that system stereo component.)

Make sure that the following items are listed in the “Device Manager” dialog box.

- “USB Audio Device” under “Sound, video and game controllers”
- “Net MD” (only when the Net MD function is activated by pressing NET MD on the unit) “SONY USB COMM*,” “USB Composite Device” and “Generic USB Hub” under “Universal Serial Bus controllers”

* It maybe displayed as “SONY PCLK USB Driver” under “Computer.”



Note

If you do not see these items or if a “!” is displayed on top of any of the icons, it means the respective device driver is not installed or recognized by the OS. In this case, install the device driver again.

- 4** Click [OK] to close the “System Properties” dialog box.

Setting up for Windows 2000/Windows Me/Windows XP

Installing the USB driver (Windows 2000)

- 1** Connect the system stereo component to the computer directly, and then start up the computer.
Quit any applications that are active.
“Found New Hardware Wizard” appears.
- 2** Click [Next].
- 3** Select “Search for a suitable driver for my device. (Recommended).” (For the computer system with the CMT-C7NT connected to it, refer to the operating instructions for that system stereo component.)
Load the Windows 2000 CD-ROM into the CD-ROM drive of the computer if the wizard requests it, and then install the drivers. Installation procedure will be repeated for each of the following devices.
 - USB audio device
 - USB composite device
 - Generic USB hub

Note

Net MD driver is installed simultaneously with SonicStage (Ver.1.5).

Installing the USB driver (Windows Me)

- 1** Connect the system stereo component to the computer directly, and then start up the computer.
Quit any applications that are active.
“Add New Hardware Wizard” appears.

(continued)

-
- 2** Select “Search for the best driver for your device. (Recommended).” (For the computer system with the CMT-C7NT connected to it, refer to the operating instructions for that system stereo component.)
Load the Windows Me CD-ROM into the CD-ROM drive of the computer if the wizard requests it, and then install the drivers. Installation procedure will be repeated for each of the following devices.
 - USB audio device
 - USB composite device
 - Generic USB hub

Installing the USB drivers (Windows XP)

- 1** Quit any applications that are active.
- 2** Connect the system stereo component to the computer directly, and then start up the computer.
Installation of the drivers starts automatically, and will be terminated after completing installation.
If “Found New Hardware Wizard” should appear, go to step 3.
- 3** Select “Install the software automatically. (Recommended).”
- 4** Click [Next].
USB drivers are installed. Click [Complete] when the “Complete” dialog box appears.

Notes

- Select “Install the software automatically. (Recommended)” and click [Next] to install Net MD driver or SONY USB COMM driver. Click [Continue] in the “Install the software” dialog box.
- Net MD driver is installed simultaneously with SonicStage (Ver.1.5). However, click [Continue] when the “Install the software” dialog box appears.

Verifying the status of the installed devices (Windows 2000/ Windows Me/Windows XP)

Be sure to check the status of the installed devices after you have installed their drivers.

1 Open the [Control Panel].
In the Start menu, point to [Settings] and click [Control Panel].
(For Windows XP) In the Start menu, click [Control Panel], and then click [Switch to Classic View] on the left panel of the window.

2 Double-click the [System] icon.
The “System Properties” dialog box appears.

Note

If you cannot find the [System] icon, click “View all Control Panel options” (in the case of Windows Me).

3 (For Windows 2000/Windows XP only) Click the [Hardware] tab.

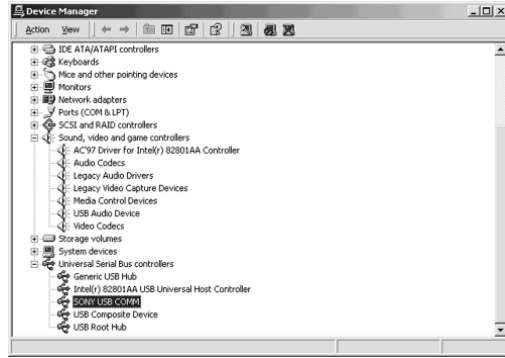
4 Click the [Device Manager] tab. (For Windows 2000/Windows XP, click the [Device Manager] button, instead) For the computer system with the CMT-C7NT connected to it, refer to the operating instructions for that system stereo component.

Make sure that the following items are listed in the “Device Manager” dialog box.

- “USB Audio Device” under “Sound, video and game controllers”
- “Net MD” (only when the Net MD function is activated by pressing NET MD on the unit) “SONY USB COMM*,” “USB Composite Device” and “Generic USB Hub” under “Universal Serial Bus controllers”


* It may be displayed as “SONY PCLK USB Driver” under “Computer.”

(continued)



Example: Window for Windows 2000

Notes

- Depending on the configuration of your computer,  may appear before the listed device only for Windows Me. This, however, does not affect the operation of the system (the computer and system stereo component).
- If you do not see these items or if a “!” is displayed on top of any of the icons, it means the respective device driver is not installed or recognized by the OS. In this case, install the device driver again.

5 Click [OK] to close the “System Properties” dialog box.

When no sound comes out of the computer

M-crew uses the USB audio device for sound playback and recording. When you start up the computer with a system stereo component connected, the USB audio device will be enabled in place of the standard audio device. As a result, no sound will come out of the built-in or external speakers of the computer, because all sounds will be output to the USB audio device via the USB cable. To allow sounds to come out of the computer, remove the USB cable from the computer.

To enable the speakers of the computer with a system stereo component connected to it, do the following procedure.

- 1** Open the [Control Panel].
In the Start menu, point to [Settings] and click [Control Panel].
(For Windows XP) In the start menu, click [Control Panel], and then click [Switch to Classic View] on the left panel of the window.
- 2** Double-click the [Sounds and Multimedia] (or [Multimedia] for Windows 98SE or [Sounds and Audio Devices] for Windows XP) icon to open the “Sounds and Multimedia Properties” (or “Multimedia Properties” for Windows 98SE or “Sounds and Audio Devices Properties” for Windows XP) dialog box.
- 3** Click the [Audio] tab, and then select the standard audio device for each “Preferred device:” (or “Default Device:” for Windows XP) of the “Sound Playback” (or “Playback” for Windows 98SE) and “Sound Recording” (or “Recording” for Windows 98SE) group boxes.
- 4** Click the “Use only preferred devices” (or “Use only default devices” for Windows XP) option to enable it.
- 5** Click [OK].

Note

Be sure to select “USB Audio Device” for each “Preferred device:” (or “Default Device:” for Windows XP) in step 3 above before you start recording to an MD.

Installing LabelMaker 5.1

Please note that if you install LabelMaker 5.1 onto the Windows XP preinstalled VAIO computer, LabelMaker 5.0 installed on it may be overwritten by the new version.

Installing LabelMaker 5.1 will not overwrite any version of LabelMaker older than 5.0 such as included in PictureGear 4.x.

- 1** Click [4. LabelMaker 5.1 (English Only) setup] in the setup window (see step 3 on page 7).
- 2** Follow the instructions that appear to install the application.

Note

Only the English version LabelMaker 5.1 is supplied.

Uninstalling the software

When you no longer require M-crew or LabelMaker 5.1, uninstall the programs as follows:

- 1** Open the [Control Panel].
In the Start menu, point to [Settings] and click [Control Panel].
(For Windows XP) In the Start menu, click [Control Panel].
- 2** Double-click the [Add/Remove Programs] icon.
(For Windows XP) When it is Classic View, switch to Category View and click [Add or Remove Programs].
The “Add/Remove Programs Properties” window appears.
(For Windows XP) The “Add or Remove Programs” window appears.
- 3** Select and click “M-crew” or “LabelMaker 5.1” in the program list.
- 4** Click [Add/Remove].
(For Windows 2000/XP) Click [Change/Remove] and follow the instruction.
Uninstaller is activated and the software selected in step 3 is deleted automatically.

Notes

- After uninstalling M-crew, the “Database” and “Jacket” folders created under the M-crew folder (usually C:\Program Files\M_crew\M333NT) and their files still remain on the hard disk. Delete them manually, if there is no more need for them.
- If you select LabelMaker 5.1 in step 3 above and uninstall it, not only LabelMaker 5.1 installed through M-crew but also any other copy of LabelMaker 5.1 that you may have installed separately from M-crew will be removed.
- Similarly, if you uninstall LabelMaker 5.1 that has been installed separately from M-crew, the label printing function will be no longer available also in M-crew.

Starting up M-crew

- 1** Turn on the system stereo component.
- 2** In the Start menu, point to [Programs] and [M-crew for CMT-M333NT] (for CMT-C7NT, [M-crew]), and then click [M-crew].
The software starts up and the M-crew Main bar appears.
The bar below is displayed immediately after M-crew is started up.
The following description assumes that M-crew is running on the computer to which the CMT-M333NT is connected as a system stereo component.



Notes

- During MD recording, a dialog box appears to prompt you to stop recording or to start up M-crew.
- M-crew (Ver.2.1E) and Net MD-enabled SonicStage (Ver.1.5) cannot be active simultaneously. To restart M-crew, quit SonicStage and then double-click the M-crew icon in the task tray on the Desktop.

Using M-crew

This section provides a short description of basic functionality and usage of bars and windows available in M-crew. The CMT-M333NT is used in this manual as an example.

For more information on using M-crew, refer to the Help (page 26).

Main bar

The Main bar provides basic functions for playing a CD/MD and operating the tuner.



A SONY logo

Drag the logo with the left mouse button to move the Main bar up or down. Right-click the logo to display a pop-up menu.

B Function Name display

Click to display and select a function (CD, MD, TUNER, etc).

C Disk Information (Radio Band) display

Displays the name of the selected CD/MD or the selected radio band depending on which function of CD/MD or TUNER is selected in the Function name display.

D Track Number/Track Name (Preset Number/Broadcasting Station Name) display

Displays the track number/track name or the preset number/broadcasting station name depending on which function of CD/MD or TUNER is selected in the Function name display.

E Timer (Frequency) display

Displays time information such as total playing time and elapsed playing time while you are playing a CD/MD. Clicking on it allows you to select a display mode. It also displays the frequency of the selected station while you are listening to the radio.

(continued)

F Operation buttons

Buttons displayed on this area appear as the CD/MD operation buttons or the tuner operation buttons depending on which function of CD/MD or TUNER is selected in the Function name display. The CD/MD operation buttons allow you to play, pause, stop, and locate a track on a CD/MD. The tuner operation buttons provide such functions as those for selecting a radio band and locating the preset number.

G Easy Mode button

Opens the Easy Mode window that provides easy access to the basic functions for playing a CD/MD, recording to an MD.

H Volume control

Adjusts the volume of the system stereo component connected to the computer.

I Tool bar switch

Click to show or hide the Tool bar.

J Help button

Click to open Help.

K Minimize button

Click to reduce the size of the window.

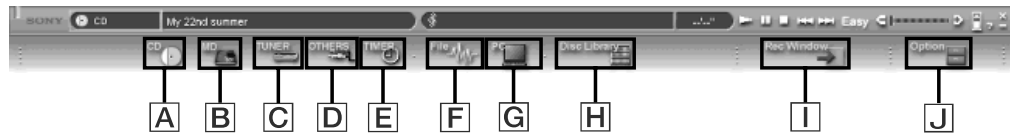
L Close button

Click to exit M-crew.

Tool bar

To view the Tool bar, click the Tool bar switch in the Main bar.

When you click a function icon in the Tool bar, the system switches to the selected function and the corresponding window appears. Note that only one window can be opened at a time.



- A CD icon**
Click to display the CD window.
- B MD icon**
Click to display the MD window.
- C TUNER icon**
Click to display the TUNER window.
- D OTHERS icon**
Click to display the OTHERS window.
- E TIMER icon**
Click to display the Timer window.
- F File icon**
Click to display the File window. Use this window to play the music files stored on your computer's hard disk.
- G PC icon**
Click to display the MUSIC LIBRARY window or the WEB RADIO window.
- H Disc Library icon**
Click to display the Disc Library window. Use this window to view or reuse data on the media that were played at least once before.
- I Rec Window icon**
Click to display the Rec window. Use this window to record to an MD from the CD player, tuner, or other sources. Rec window has two different recording modes; synchro recording mode and manual recording mode.
- J Option icon**
Click to display the "Option" dialog box. Use this dialog box to enter miscellaneous settings.

Operation windows

When you click a function icon in the Tool bar, a window corresponding to the selected function appears. Operation windows provide different sets of functions according to the function selected in the Tool bar, such as those for selecting a play mode and editing disc names.




Easy Mode window

When you click the Easy Mode button in the Main bar, the Easy Mode window appears. The Easy Mode window allows you to use basic functions of M-crew from within the window, such as those for playing a CD/MD and recording to an MD.

To return to the normal window, click the Normal Mode button in the window.



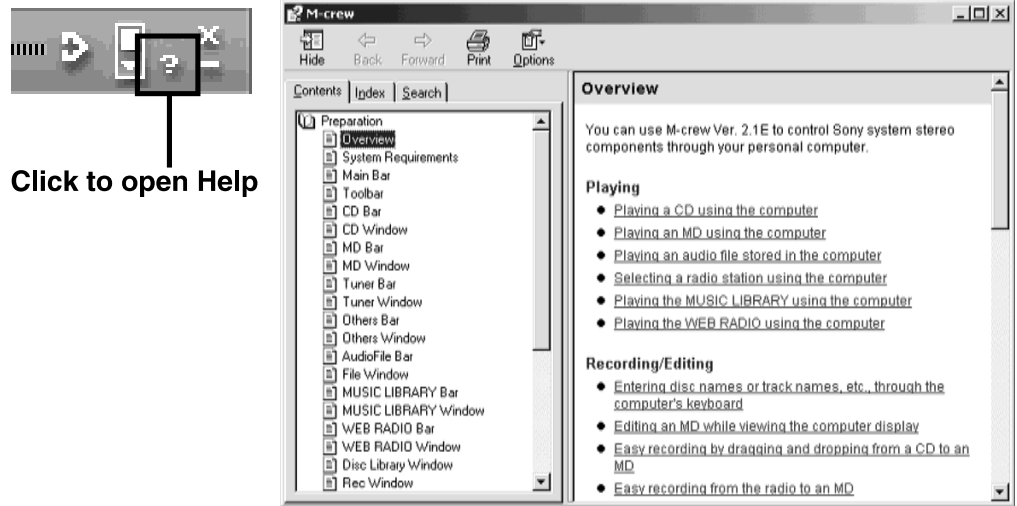
Quitting the software



- 1** Click  in the Main bar.
A dialog box for quitting the software appears.
- 2** Click [Do not turn off power].
M-crew ends.
If you want to turn off the system stereo component as well, click [Turn off power].

Using Help

Opening the Help table of contents

Click the Help button on the Main bar. The M-crew table of contents will appear.



- Double-click  to display the topics within.
- Click  to display an explanation of the given item.
- Click an underlined item in an explanation to display a related explanation on another page.

Searching by Keyword

- 1 Click the [Index] tab in the above topic search dialog box.
- 2 Enter a word or phrase that you want to search for or select the keyword by scrolling the [Index] tab list.
- 3 Click [Display].

A topic containing the selected keyword appears in the right frame of the dialog box.

If the “Topics Found” dialog box appears, select the appropriate topic and click [Display].

Finding topics with a certain word or phrase

- 1 Click the [Search] tab in the above topic search dialog box.
- 2 Enter a word or phrase that is related to the desired topic, and then click [List Topics]. The topics that are found appear in the “Select Topic to display:” list box.
- 3 Select the appropriate entry and click [Display].

A topic corresponding to the selected entry appears in the right frame of the dialog box.

Troubleshooting

If you experience any of the following difficulties while using this software, use this troubleshooting guide to remedy the problem. Should any problem persist, consult your nearest Sony dealer.

Please also refer to your computer's manual, as well as the "Readme.txt" file installed on the hard disk with the software.

To open the "Readme" file, go to the Start menu and select [Programs] and [M-crew for CMT-M333NT], and then click [Readme]. (For CMT-C7NT, select [Programs] and [M-crew], and then click [Readme].)

Problem	Cause/countermeasure
M-crew aborts automatically.	SonicStage is started. → M-crew and SonicStage cannot be active simultaneously. Therefore, starting SonicStage while M-crew is active may cause M-crew to abort. To restart M-crew, quit SonicStage, and then double-click the M-crew icon in the task tray on the Desktop. You can also select "Restart M-crew" from the menu that can be opened by right-clicking on the Desktop.
The message "Equipment does not respond. Check connections." appears.	The USB cable is not properly connected to the USB port on the computer. → Check the USB cable connection. → Try disconnecting the USB cable from the computer, and then connecting it again. The USB cable is not properly connected to the system stereo component. → Check the USB cable connection. → Check that the AC power cord of the system stereo component is connected to an AC outlet.

(continued)

Problem	Cause/countermeasure
M-crew does not start up, no screen response or screen error.	<ul style="list-style-type: none"> → Turn the power of the system stereo component off and on, and then restart M-crew. → Try disconnecting the USB cable from the system stereo component and from the computer, and then connecting it again. → Start up another often-used application and verify that the computer functions properly. → After uninstalling the M-crew software (page 19), try re-installing it (page 7).
Text input, recording, editing etc., cannot be done.	<p>The disc's protect tab may be set to write-protect.</p> <ul style="list-style-type: none"> → Slide the tab so that recording is possible. <p>The MD may be a commercial playback-only MD (an MD with prerecorded tracks).</p> <ul style="list-style-type: none"> → Text input, recording, editing, etc., are not possible on commercial playback-only MDs.
The system stereo component does not respond.	<ul style="list-style-type: none"> → Check the USB cable connection. → Try disconnecting the USB cable from the system stereo component and from the computer, and then connecting it again.
The displayed name of the MD or CD does not match the disc's contents.	<ul style="list-style-type: none"> → Click the Reload button. → Restart M-crew. Should the problem persist, the data in the Disc Library may be corrupted. Enter the names again.
The device settings cannot be made correctly.	<ul style="list-style-type: none"> → Click the Readme file.
No sound comes out of the built-in or external speakers of the computer.	<p>The USB audio device is preferred on the computer that has a USB connection to a system stereo component.</p> <ul style="list-style-type: none"> → Select the standard audio device (usually the built-in sound card of the computer) for the preferred device in the "Sounds and Multimedia Properties" dialog box (page 17).

Problem**Cause/countermeasure**

The system sounds (warning alarm/mail arrival notice) are not heard.

→ The system sounds have been specified not to sound during M-crew startup, or the setting may have changed to OFF when M-crew was abnormally ended. To restore the sounds, restart M-crew and then quit the program normally. Or double-click the backup file (reg0.reg to reg3.reg) in the M-crew folder and follow the instructions to set up the program again (except for Windows XP Professional/Windows XP Home Edition).
